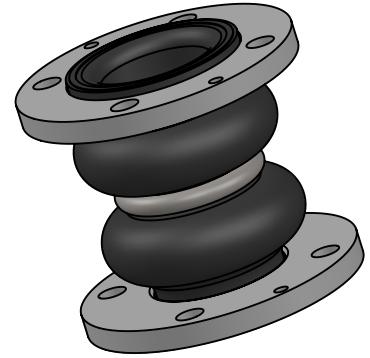


**\*Max Operating Conditions**

Temp (F)	Pressure (PSI)	
	2" - 12"	14" - 24"
170°	225	125
180°	200	115
190°	175	105
200°	150	95
210°	125	40
220°	100	35
230°	75	25



MAXIMUM WORKING TEMPERATURE 230°F

**LEAD FREE**

The wetted surface of this product contacted by consumable water contains less than one quarter of one percent (0.25%) of lead by weight. Material complies with state codes and standards, where applicable, requiring reduced lead content.

**Notes:**

For installation instructions go to [www.metroflex.com](http://www.metroflex.com). Joint must be installed at its neutral length, and the bolts properly torqued. Not suitable for steam or vacuum applications. If connecting pipe is not anchored and guided, control units must be used. Contact factory for other sizes.

TO BE FURNISHED WITH CONTROL UNITS:

YES

NO

ITEM	PART NAME	MATERIAL
1	COVER	EPDM
2	TUBE	EPDM
3	ANCHOR WIRE	GALV. STEEL
4	ROOT RING	STEEL
5	FLANGE	GALV. STEEL, 150#, DRILLED

\*EPDM is the standard elastomer for the interior and exterior covering. Contact factory for other elastomers.

**MOVEMENT CAPABILITY**

Qty	Part Number	Size I.D. (in)	F/F (in)	MOVEMENT CAPABILITY				Weight (Lbs)	No. Holes	Hole Size
				AXIAL		DEFLECTION				
				Comp. (in)	Elong. (in)	Lateral (in)	Angular (Degrees)			
	DSEE0200	2	7	2	1.125	1.75	40	10	4	0.75
	DSEE0250	2.5	7	2	1.125	1.75	40	13	4	0.75
	DSEE0300	3	7	2	1.375	1.75	40	14	4	0.75
	DSEE0400	4	9	2	1.375	1.5	35	15	8	0.75
	DSEE0500	5	9	2	1.375	1.5	30	24	8	0.875
	DSEE0600	6	9	2	1.375	1.5	30	33	8	0.875
	DSEE0800	8	13	2.375	1.375	1.375	30	48	8	0.875
	DSEE1000	10	13	2.375	1.375	1.375	30	65	12	1
	DSEE1200	12	13	2.375	1.375	1.375	20	103	12	1
	DSEE1400	14	13.75	1.5	1.125	1.125	20	128	12	1.125
	DSEE1600	16	13.75	1.5	1.125	1.125	20	158	16	1.125
	DSEE1800	18	13.75	1.5	1.125	1.125	20	180	16	1.25
	DSEE2000	20	13.75	1.5	1.125	1.125	20	210	20	1.25
	DSEE2400	24	13.75	1.5625	1.1875	1.1875	20	295	20	1.375

**PROJECT INFO**

\_\_\_\_\_

\_\_\_\_\_

CUSTOMER: \_\_\_\_\_

PROJECT: \_\_\_\_\_

ENGINEER: \_\_\_\_\_

REV. 1 24" ADDED DATE 5/6/2015

**Metroflex**  
for pipes in motion  
2323 W. HUBBARD ST.  
CHICAGO, IL 60612  
TEL: 312-738-3800  
FAX: 312-738-0415  
WWW.METRAFLEX.COM

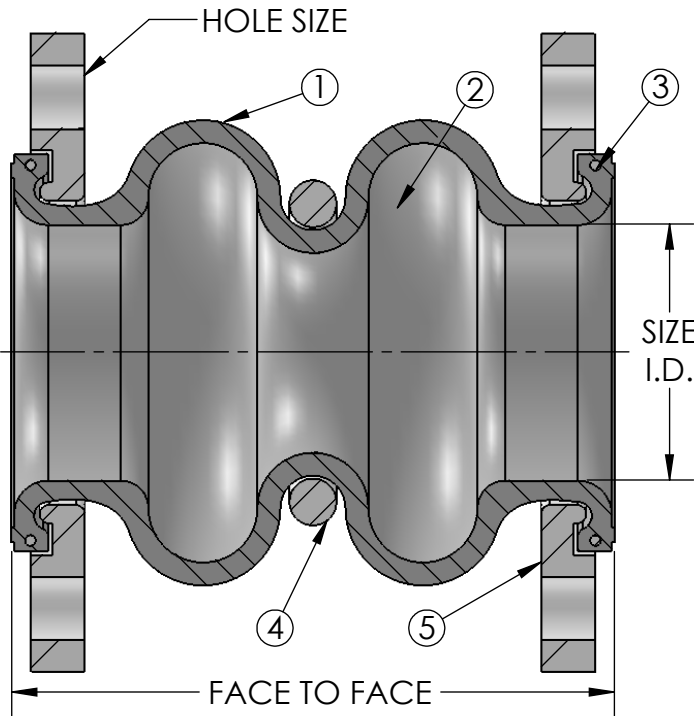
**DOUBLESPIHERE**

EPDM DRILLED SPHERICAL CONNECTOR

DRAWN BY: **DKISH** DATE: **11/5/2014**

APPROVED: **JC** DATE: **11/5/2014**

SCALE: **NONE** DRAWING NUMBER: **DSR-EE**



**\*Max Operating Conditions**

Temp (F)	Pressure (PSI)	
	2" - 12"	14" - 20"
170°	225	125
180°	200	115
190°	175	105
200°	150	95
210°	125	40
220°	100	35
230°	75	25



MAXIMUM WORKING TEMPERATURE 230°F

**LEAD FREE**

The wetted surface of this product contacted by consumable water contains less than one quarter of one percent (0.25%) of lead by weight. Material complies with state codes and standards, where applicable, requiring reduced lead content.

**Notes:**

For installation instructions go to [www.metroflex.com](http://www.metroflex.com). Joint must be installed at its neutral length, and the bolts properly torqued. Not suitable for steam or vacuum applications. If connecting pipe is not anchored and guided, control units must be used.

**TO BE FURNISHED WITH CONTROL UNITS:**

YES

NO

ITEM	PART NAME	MATERIAL
1	COVER	NEOPRENE
2	TUBE	NEOPRENE
3	ANCHOR WIRE	GALV. STEEL
4	ROOT RING	STEEL
5	FLANGE	GALV. STEEL, 150#, DRILLED

OTHER MATERIALS AND SIZES AVAILABLE

Qty	Part Number	Size I.D. (in)	F/F (in)	MOVEMENT CAPABILITY				Weight (Lbs)	No. Holes	Hole Size
				AXIAL		DEFLECTION				
				Comp. (in)	Elong. (in)	Lateral (in)	Angular (Degrees)			
	DSNN0200	2	7	2	1.125	1.75	40	10	4	0.75
	DSNN0250	2.5	7	2	1.125	1.75	40	13	4	0.75
	DSNN0300	3	7	2	1.375	1.75	40	14	4	0.75
	DSNN0400	4	9	2	1.375	1.5	35	15	8	0.75
	DSNN0500	5	9	2	1.375	1.5	30	24	8	0.875
	DSNN0600	6	9	2	1.375	1.5	30	33	8	0.875
	DSNN0800	8	13	2.375	1.375	1.375	30	48	8	0.875
	DSNN1000	10	13	2.375	1.375	1.375	30	65	12	1
	DSNN1200	12	13	2.375	1.375	1.375	20	103	12	1
	DSNN1400	14	13.75	1.5	1.125	1.125	20	128	12	1.125
	DSNN1600	16	13.75	1.5	1.125	1.125	20	158	16	1.125
	DSNN1800	18	13.75	1.5	1.125	1.125	20	180	16	1.25
	DSNN2000	20	13.75	1.5	1.125	1.125	20	210	20	1.25

**PROJECT INFO**

---



---



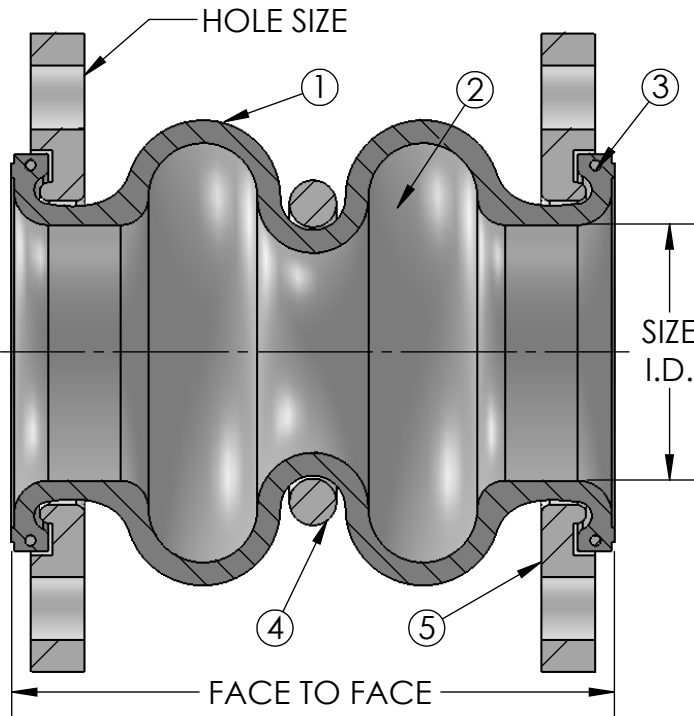
---

CUSTOMER: \_\_\_\_\_

PROJECT: \_\_\_\_\_

ENGINEER: \_\_\_\_\_

REV.	DATE
2323 W. HUBBARD ST. CHICAGO, IL 60612 TEL: 312-738-3800 FAX: 312-738-0415 WWW.METRAFLEX.COM	
<h2>DOUBLESPIHERE</h2> <h3>NEOPRENE DRILLED SPHERICAL CONNECTOR</h3>	
DRAWN BY: DKISH	DATE: 1/17/2014
APPROVED: JC	DATE: 1/17/2014
SCALE: NONE	DRAWING NUMBER: DSR-NN



**\*Max Operating Conditions**

Temp (F)	Pressure (PSI)	
	2" - 12"	14" - 20"
170°	225	125
180°	200	115
190°	175	105
200°	150	95
210°	125	40
220°	100	35
230°	75	25



MAXIMUM WORKING TEMPERATURE 230°F

**LEAD FREE**

The wetted surface of this product contacted by consumable water contains less than one quarter of one percent (0.25%) of lead by weight. Material complies with state codes and standards, where applicable, requiring reduced lead content.

**Notes:**

For installation instructions go to [www.metroflex.com](http://www.metroflex.com). Joint must be installed at its neutral length, and the bolts properly torqued. Not suitable for steam or vacuum applications. If connecting pipe is not anchored and guided, control units must be used.

ITEM	PART NAME	MATERIAL
1	COVER	BUTYL
2	TUBE	BUTYL
3	ANCHOR WIRE	GALV. STEEL
4	ROOT RING	STEEL
5	FLANGE	GALV. STEEL, 150#, DRILLED

OTHER MATERIALS AND SIZES AVAILABLE

**TO BE FURNISHED WITH CONTROL UNITS:**

YES

NO

Qty	Part Number	Size I.D. (in)	F/F (in)	MOVEMENT CAPABILITY				Weight (Lbs)	No. Holes	Hole Size
				AXIAL		DEFLECTION				
				Comp. (in)	Elong. (in)	Lateral (in)	Angular (Degrees)			
	DSBB0200	2	7	2	1.125	1.75	40	10	4	0.75
	DSBB0250	2.5	7	2	1.125	1.75	40	13	4	0.75
	DSBB0300	3	7	2	1.375	1.75	40	14	4	0.75
	DSBB0400	4	9	2	1.375	1.5	35	15	8	0.75
	DSBB0500	5	9	2	1.375	1.5	30	24	8	0.875
	DSBB0600	6	9	2	1.375	1.5	30	33	8	0.875
	DSBB0800	8	13	2.375	1.375	1.375	30	48	8	0.875
	DSBB1000	10	13	2.375	1.375	1.375	30	65	12	1
	DSBB1200	12	13	2.375	1.375	1.375	20	103	12	1
	DSBB1400	14	13.75	1.5	1.125	1.125	20	128	12	1.125
	DSBB1600	16	13.75	1.5	1.125	1.125	20	158	16	1.125
	DSBB1800	18	13.75	1.5	1.125	1.125	20	180	16	1.25
	DSBB2000	20	13.75	1.5	1.125	1.125	20	210	20	1.25

**PROJECT INFO**

---



---



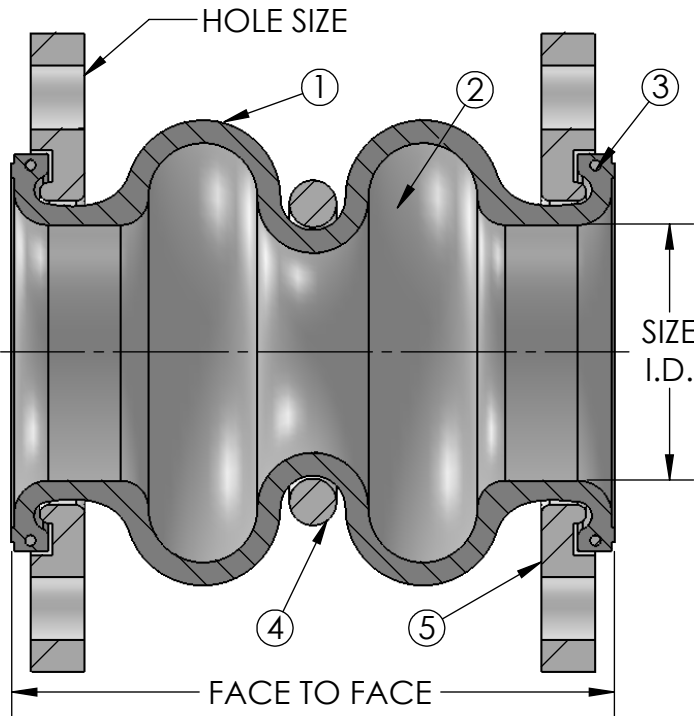
---

CUSTOMER: \_\_\_\_\_

PROJECT: \_\_\_\_\_

ENGINEER: \_\_\_\_\_

REV.	DATE
2323 W. HUBBARD ST. CHICAGO, IL 60612 TEL: 312-738-3800 FAX: 312-738-0415 WWW.METRAFLEX.COM	
<b>DOUBLESHERE</b> BUTYL DRILLED SPHERICAL CONNECTOR	
DRAWN BY: DKISH	DATE: 1/17/2014
APPROVED: JC	DATE: 1/17/2014
SCALE: NONE	DRAWING NUMBER: DSR-BB



**\*Max Operating Conditions**

Temp (F)	Pressure (PSI)	
	2" - 12"	14" - 20"
170°	225	125
180°	200	115
190°	175	105
200°	150	95
210°	125	40
220°	100	35
230°	75	25



MAXIMUM WORKING TEMPERATURE 230°F

**LEAD FREE**

The wetted surface of this product contacted by consumable water contains less than one quarter of one percent (0.25%) of lead by weight. Material complies with state codes and standards, where applicable, requiring reduced lead content.

**Notes:**

For installation instructions go to [www.metroflex.com](http://www.metroflex.com). Joint must be installed at its neutral length, and the bolts properly torqued. Not suitable for steam or vacuum applications. If connecting pipe is not anchored and guided, control units must be used.

ITEM	PART NAME	MATERIAL
1	COVER	NEOPRENE
2	TUBE	NITRILE
3	ANCHOR WIRE	GALV. STEEL
4	ROOT RING	STEEL
5	FLANGE	GALV. STEEL, 150#, DRILLED

OTHER MATERIALS AND SIZES AVAILABLE

**TO BE FURNISHED WITH CONTROL UNITS:**

YES

NO

Qty	Part Number	Size I.D. (in)	F/F (in)	MOVEMENT CAPABILITY				Weight (Lbs)	No. Holes	Hole Size
				AXIAL		DEFLECTION				
				Comp. (in)	Elong. (in)	Lateral (in)	Angular (Degrees)			
	DSPN0200	2	7	2	1.125	1.75	40	10	4	0.75
	DSPN0250	2.5	7	2	1.125	1.75	40	13	4	0.75
	DSPN0300	3	7	2	1.375	1.75	40	14	4	0.75
	DSPN0400	4	9	2	1.375	1.5	35	15	8	0.75
	DSPN0500	5	9	2	1.375	1.5	30	24	8	0.875
	DSPN0600	6	9	2	1.375	1.5	30	33	8	0.875
	DSPN0800	8	13	2.375	1.375	1.375	30	48	8	0.875
	DSPN1000	10	13	2.375	1.375	1.375	30	65	12	1
	DSPN1200	12	13	2.375	1.375	1.375	20	103	12	1
	DSPN1400	14	13.75	1.5	1.125	1.125	20	128	12	1.125
	DSPN1600	16	13.75	1.5	1.125	1.125	20	158	16	1.125
	DSPN1800	18	13.75	1.5	1.125	1.125	20	180	16	1.25
	DSPN2000	20	13.75	1.5	1.125	1.125	20	210	20	1.25

**PROJECT INFO**

CUSTOMER: \_\_\_\_\_

PROJECT: \_\_\_\_\_

ENGINEER: \_\_\_\_\_

REV.

DATE



2323 W. HUBBARD ST.  
CHICAGO, IL 60612  
TEL: 312-738-3800  
FAX: 312-738-0415  
WWW.METRAFLEX.COM

**DOUBLESHERE**

**NITRILE DRILLED SPHERICAL CONNECTOR**

DRAWN BY: DKISH

DATE: 1/17/2014

APPROVED: JC

DATE: 1/17/2014

SCALE:

DRAWING NUMBER:

NONE

DSR-PN