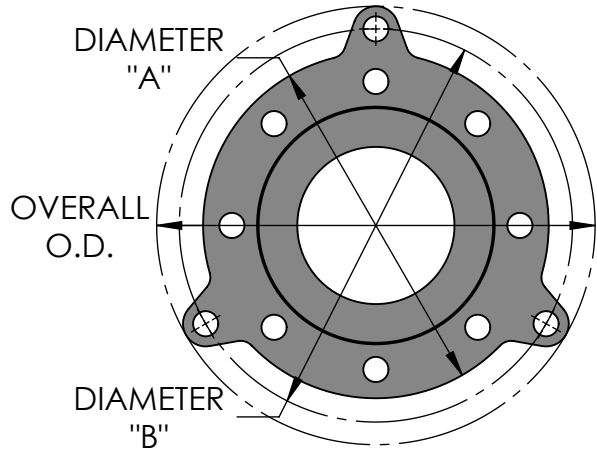


Size I.D. (in)	Flange Thickness (in)	Diameter "A" (in)	Diameter "B" (in)	Overall O.D. (in)	# Of Holes	Thread Size
1	5/16	4-1/4	5-1/8	6	4	1/2-12UNC
1-1/2	11/32	5	5-7/8	6-3/4	4	1/2-12UNC
2	7/16	6	6-7/8	8-1/8	4	5/8-11UNC
2-1/2	1/2	7	8-1/8	9-3/8	4	5/8-11UNC
3	1/2	7-1/2	8-3/4	10	4	5/8-11UNC
4	5/8	9	9-7/8	11-1/8	8	5/8-11UNC
5	3/4	10	11-1/2	13	8	3/4-10UNC
6	3/4	11	12-1/2	14	8	3/4-10UNC
8	15/16	13-1/2	14-3/4	16-1/4	8	3/4-10UNC
10	1	16	17-1/2	19	12	7/8-9UNC
12	1	19	20-1/2	22	12	7/8-9UNC



\*Limit bolts are factory set to prevent extension. If extension is required, the stop nut must be adjusted.

Qty	Size I.D. (in)	F/F (in)	Maximum Axial Travel (in)	Maximum Offset (in)	MAXIMUM PRESSURE (PSI) VS TEMPERATURE				Weight (Lbs)	Vacuum Rating (in. Hg/°F)
					70°F	200°F	300°F	400°F		
	1	1-3/8	1/4	1/8	170	135	100	70	2	29.9/425
	1-1/2	1-3/8	1/4	1/8	170	135	100	70	3	29.9/425
	2	1-9/16	1/4	1/8	170	135	95	65	7	29.9/425
	2-1/2	2-1/4	5/16	1/8	165	130	95	65	10	29.9/425
	3	2-1/4	3/8	3/16	165	125	90	60	12	29.9/425
	4	2-5/8	1/2	1/4	160	125	85	60	18	29.9/400
	5	3-1/4	1/2	1/4	155	120	85	60	24	29.9/400
	6	2-3/4	1/2	1/4	150	115	85	55	29	29.9/400
	8	4	1/2	1/4	145	110	80	55	47	29.9/250
	10	5-1/4	1/2	1/4	140	110	80	55	64	29.9/250
	12	6	1/2	1/4	135	105	75	50	72	29.9/75

Note: Angular Deflection approx. 7 degrees. Maximum Axial Travel is based on installation with no misalignment or angular deflection. Maximum Offset is based on installation at neutral length with limit bolts in place.

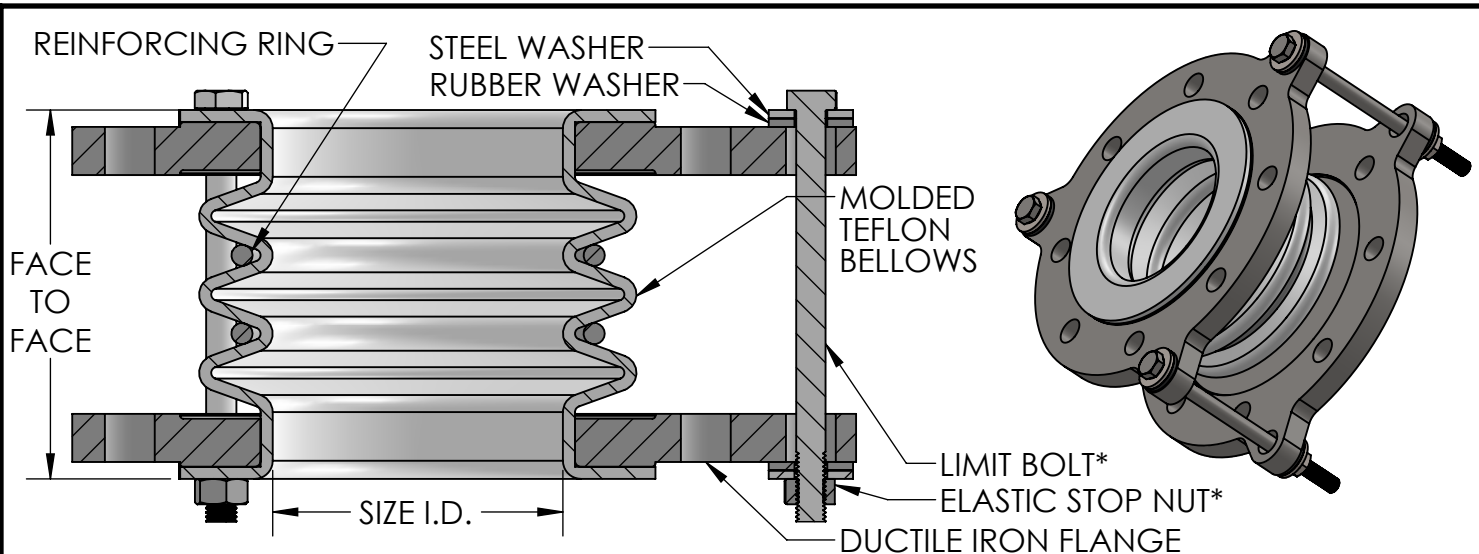
Project Info	

CUSTOMER: \_\_\_\_\_

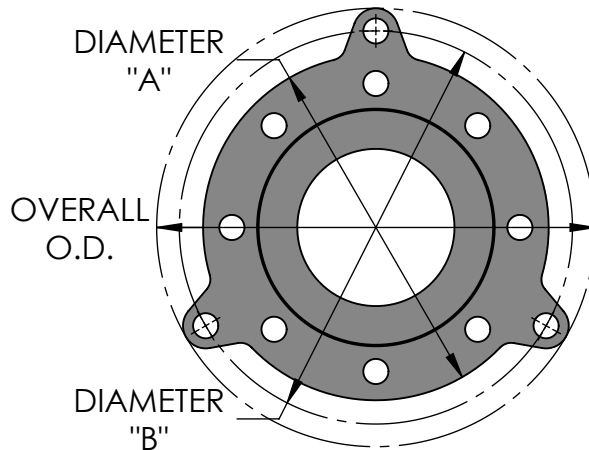
PROJECT: \_\_\_\_\_

ENGINEER: \_\_\_\_\_

REV.	DATE
2323 W. HUBBARD ST. CHICAGO, IL 60612 TEL: 312-738-3800 FAX: 312-738-0415 WWW.METRAFLEX.COM	
<b>MODEL T1R</b> <b>PTFE MOLDED FLEXIBLE COUPLING</b>	
DRAWN BY: DKISH	DATE: 8/11/2014
APPROVED: DANH	DATE: 8/11/2014
SCALE: NONE	DRAWING NUMBER: T1R-1



Size I.D. (in)	Flange Thickness (in)	Diameter "A" (in)	Diameter "B" (in)	Overall O.D. (in)	# Of Holes	Thread Size
1	5/16	4-1/4	5-1/8	6	4	1/2-12UNC
1-1/2	11/32	5	5-7/8	6-3/4	4	1/2-12UNC
2	7/16	6	6-7/8	8-1/8	4	5/8-11UNC
2-1/2	1/2	7	8-1/8	9-3/8	4	5/8-11UNC
3	1/2	7-1/2	8-3/4	10	4	5/8-11UNC
4	5/8	9	9-7/8	11-1/8	8	5/8-11UNC
5	3/4	10	11-1/2	13	8	3/4-10UNC
6	3/4	11	12-1/2	14	8	3/4-10UNC
8	15/16	13-1/2	14-3/4	16-1/4	8	3/4-10UNC
10	1	16	17-1/2	19	12	7/8-9UNC
12	1	19	20-1/2	22	12	7/8-9UNC



\*Limit bolts are factory set to prevent extension. If extension is required, the stop nut must be adjusted.

Qty	Size I.D. (in)	F/F (in)	Maximum Axial Travel (in)	Maximum Offset (in)	MAXIMUM PRESSURE (PSI) VS TEMPERATURE				Weight (Lbs)	Vacuum Rating (in. Hg/°F)
					70°F	200°F	300°F	400°F		
	1	1-3/4	1/2	1/4	145	105	70	45	2	29.9/400
	1-1/2	2	1/2	1/4	145	105	70	45	4	29.9/400
	2	2-3/4	3/4	3/8	140	105	70	45	8	29.9/400
	2-1/2	3-3/16	3/4	3/8	140	100	65	40	11	29.9/400
	3	3-5/8	1	1/2	135	100	65	40	13	29.9/400
	4	3-5/8	1	1/2	130	95	60	35	19	29.9/400
	5	4	1	1/2	130	90	60	35	25	29.9/300
	6	4	1-1/8	9/16	125	90	60	35	30	29.9/300
	8	6	1-1/8	9/16	120	85	55	32	48	29.9/125
	10	7	1-1/8	3/8	120	85	55	30	80	19.0/212
	12	7-7/8	1-3/16	5/16	115	80	50	30	105	10.0/212

Note: Angular Deflection approx. 14 degrees. Maximum Axial Travel is based on installation with no misalignment or angular deflection. Maximum Offset is based on installation at neutral length with limit bolts in place.

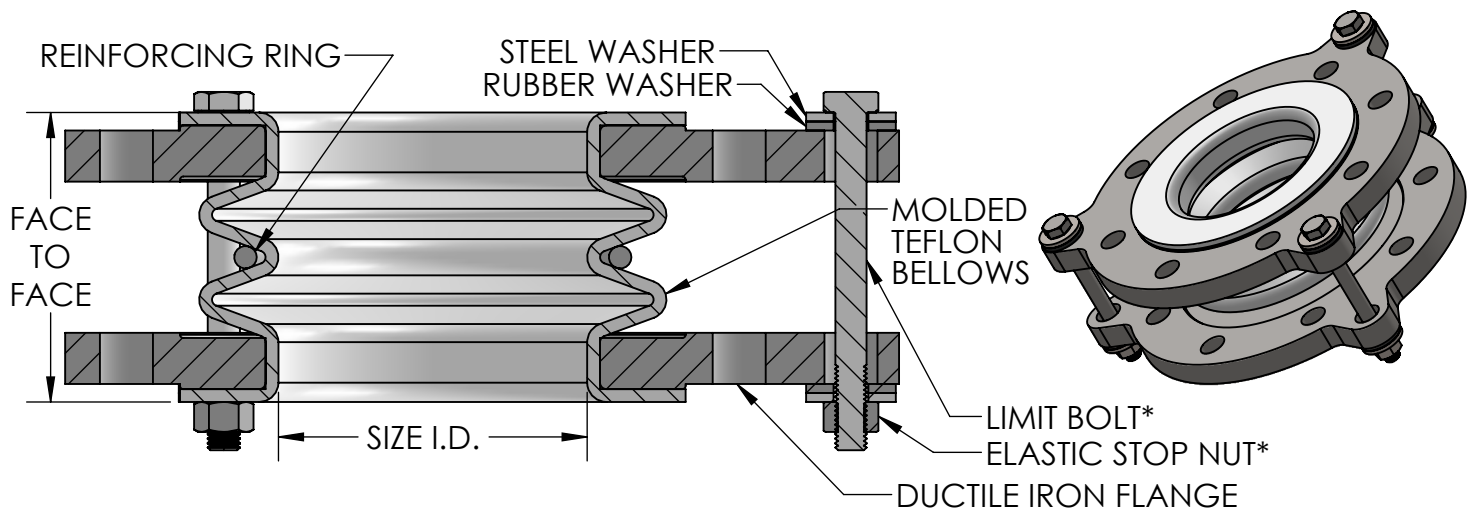
Project Info	

CUSTOMER: \_\_\_\_\_

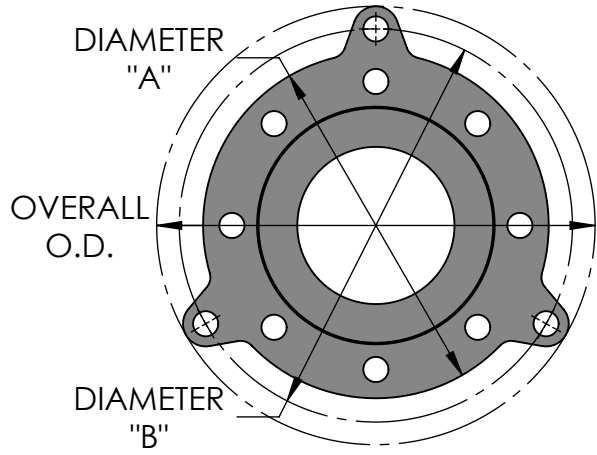
PROJECT: \_\_\_\_\_

ENGINEER: \_\_\_\_\_

REV.	DATE
2323 W. HUBBARD ST. CHICAGO, IL 60612 TEL: 312-738-3800 FAX: 312-738-0415 WWW.METRAFLEX.COM	
<b>MODEL T2R</b> <b>PTFE MOLDED FLEXIBLE COUPLING</b>	
DRAWN BY: DKISH	DATE: 8/11/2014
APPROVED: DANH	DATE: 8/11/2014
SCALE: NONE	DRAWING NUMBER: T2R-1



Size I.D. (in)	Flange Thickness (in)	Diameter "A" (in)	Diameter "B" (in)	Overall O.D. (in)	# Of Holes	Thread Size
1	5/16	4-1/4	5-1/8	6	4	1/2-12UNC
1-1/2	11/32	5	5-7/8	6-3/4	4	1/2-12UNC
2	7/16	6	6-7/8	8-1/8	4	5/8-11UNC
2-1/2	1/2	7	8-1/8	9-3/8	4	5/8-11UNC
3	1/2	7-1/2	8-3/4	10	4	5/8-11UNC
4	5/8	9	9-7/8	11-1/8	8	5/8-11UNC
5	3/4	10	11-1/2	13	8	3/4-10UNC
6	3/4	11	12-1/2	14	8	3/4-10UNC
8	15/16	13-1/2	14-3/4	16-1/4	8	3/4-10UNC
10	1	16	17-1/2	19	12	7/8-9UNC
12	1	19	20-1/2	22	12	7/8-9UNC



\*Limit bolts are factory set to prevent extension. If extension is required, the stop nut must be adjusted.

Qty	Size I.D. (in)	F/F (in)	Maximum Axial Travel (in)	Maximum Offset (in)	MAXIMUM PRESSURE (PSI) VS TEMPERATURE				Weight (Lbs)	Vacuum Rating (in. Hg/°F)
					70°F	200°F	300°F	400°F		
	1	1-3/8	1/4	1/8	185	130	100	68	2	29.9/425
	1-1/2	1-3/8	1/4	1/8	185	130	100	68	3	29.9/425
	2	1-9/16	1/4	1/8	185	130	100	68	7	29.9/425
	2-1/2	2-1/4	5/16	1/8	185	130	100	68	10	29.9/425
	3	2-1/4	3/8	3/16	185	130	100	68	12	29.9/425
	4	2-5/8	1/2	1/4	185	130	100	68	18	29.9/400
	5	3-1/4	1/2	1/4	185	130	100	68	24	29.9/400
	6	2-3/4	1/2	1/4	185	130	100	68	29	29.9/400
	8	4	1/2	1/4	160	112	88	60	47	29.9/250
	10	5-1/4	1/2	1/4	160	112	88	60	64	29.9/250
	12	6	1/2	1/4	160	112	88	60	72	29.9/75

Note: Angular Deflection approx. 7 degrees. Maximum Axial Travel is based on installation with no misalignment or angular deflection. Maximum Offset is based on installation at neutral length with limit bolts in place.

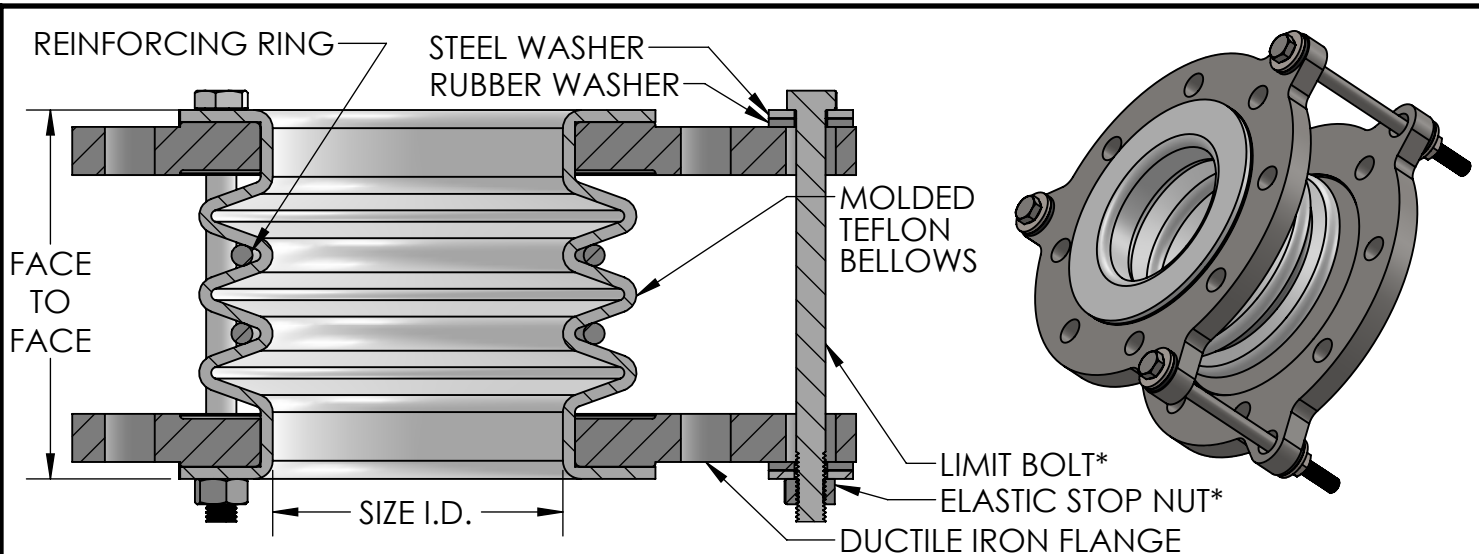
Project Info	

CUSTOMER: \_\_\_\_\_

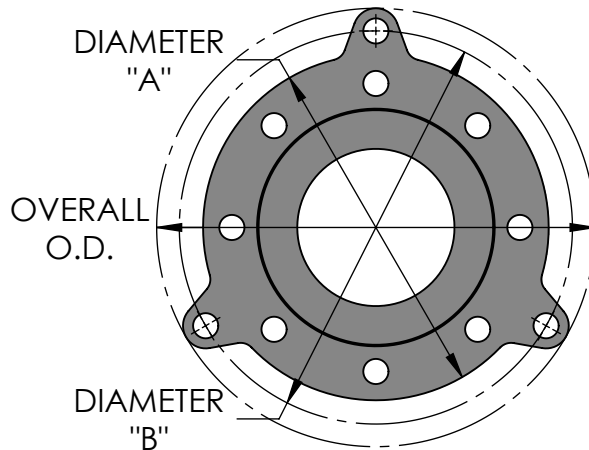
PROJECT: \_\_\_\_\_

ENGINEER: \_\_\_\_\_

REV.	DATE
2323 W. HUBBARD ST. CHICAGO, IL 60612 TEL: 312-738-3800 FAX: 312-738-0415 WWW.METRAFLEX.COM	
<b>MODEL T1C</b> <b>PTFE MOLDED FLEXIBLE COUPLING</b>	
DRAWN BY: DKISH	DATE: 8/11/2014
APPROVED: DANH	DATE: 8/11/2014
SCALE: NONE	DRAWING NUMBER: T1C-1



Size I.D. (in)	Flange Thickness (in)	Diameter "A" (in)	Diameter "B" (in)	Overall O.D. (in)	# Of Holes	Thread Size
1	5/16	4-1/4	5-1/8	6	4	1/2-12UNC
1-1/2	11/32	5	5-7/8	6-3/4	4	1/2-12UNC
2	7/16	6	6-7/8	8-1/8	4	5/8-11UNC
2-1/2	1/2	7	8-1/8	9-3/8	4	5/8-11UNC
3	1/2	7-1/2	8-3/4	10	4	5/8-11UNC
4	5/8	9	9-7/8	11-1/8	8	5/8-11UNC
5	3/4	10	11-1/2	13	8	3/4-10UNC
6	3/4	11	12-1/2	14	8	3/4-10UNC
8	15/16	13-1/2	14-3/4	16-1/4	8	3/4-10UNC
10	1	16	17-1/2	19	12	7/8-9UNC
12	1	19	20-1/2	22	12	7/8-9UNC



\*Limit bolts are factory set to prevent extension. If extension is required, the stop nut must be adjusted.

Qty	Size I.D. (in)	F/F (in)	Maximum Axial Travel (in)	Maximum Offset (in)	MAXIMUM PRESSURE (PSI) VS TEMPERATURE				Weight (Lbs)	Vacuum Rating (in. Hg/°F)
					70°F	200°F	300°F	400°F		
	1	1-3/4	1/2	1/4	140	90	64	42	2	29.9/400
	1-1/2	2	1/2	1/4	140	90	64	42	4	29.9/400
	2	2-3/4	3/4	3/8	140	90	64	42	8	29.9/400
	2-1/2	3-3/16	3/4	3/8	140	90	64	42	11	29.9/400
	3	3-5/8	1	1/2	140	90	64	42	13	29.9/400
	4	3-5/8	1	1/2	140	90	64	42	19	29.9/400
	5	4	1	1/2	140	90	64	42	25	29.9/300
	6	4	1-1/8	9/16	140	90	64	42	30	29.9/300
	8	6	1-1/8	9/16	120	80	54	37	48	29.9/125
	10	7	1-1/8	3/8	70	48	30	17	80	19.0/212
	12	7-7/8	1-3/16	5/16	70	48	30	17	105	10.0/212

Note: Angular Deflection approx. 14 degrees. Maximum Axial Travel is based on installation with no misalignment or angular deflection. Maximum Offset is based on installation at neutral length with limit bolts in place.

Project Info	

CUSTOMER: \_\_\_\_\_

PROJECT: \_\_\_\_\_

ENGINEER: \_\_\_\_\_

REV.	DATE
2323 W. HUBBARD ST. CHICAGO, IL 60612 TEL: 312-738-3800 FAX: 312-738-0415 WWW.METRAFLEX.COM	
<b>MODEL T2C</b> <b>PTFE MOLDED FLEXIBLE COUPLING</b>	
DRAWN BY: DKISH	DATE: 8/11/2014
APPROVED: DANH	DATE: 8/11/2014
SCALE: NONE	DRAWING NUMBER: T2C-1