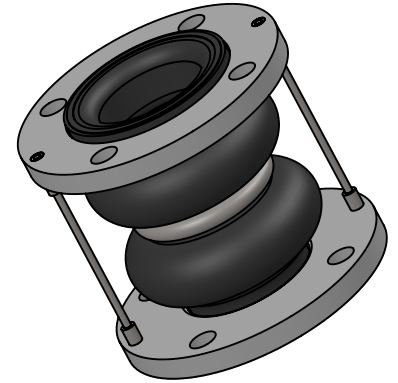


Temp. (°F)	Pressure (PSI)
170°	225
180°	200
190°	175
200°	150
210°	125
220°	100
230°	75

MAXIMUM WORKING TEMPERATURE 230°F



### LEAD FREE

The wetted surface of this product contacted by consumable water contains less than one quarter of one percent (0.25%) of lead by weight. Material complies with state codes and standards, where applicable, requiring reduced lead content.

ITEM	PART NAME	MATERIAL
1	COVER	EPDM
2	TUBE	EPDM
3	ANCHOR WIRE	GALV. STEEL
4	FLANGE	GALV. STEEL, 150#, DRILLED
5	CABLE	GALV. STEEL AIRCRAFT CABLE
6	ROOT RING	STEEL

\*EPDM is the standard elastomer for the interior and exterior covering. Contact factory for other elastomers.

### Notes:

For installation instructions go to [www.metroflex.com](http://www.metroflex.com). Joint must be installed at its neutral length, and the bolts properly torqued. Not suitable for steam or vacuum applications. Contact factory for other sizes.

### MOVEMENT CAPABILITY

Qty	Part Number	Size I.D. (in)	F/F (in)	MOVEMENT CAPABILITY				Weight (Lbs)	No. Cables	Hole Size
				AXIAL		DEFLECTION				
				Comp. (in)	Elong. (in)	Lateral (in)	Angular (Deg)			
	DSRCEE0200	2	7	2	0.1875	1	10	10	2	0.75
	DSRCEE0250	2.5	7	2	0.1875	1	13	13	2	0.75
	DSRCEE0300	3	7	2	0.1875	1	14	14	2	0.75
	DSRCEE0400	4	9	2	0.25	1.5	15	15	2	0.75
	DSRCEE0500	5	9	2	0.25	1.5	24	24	4	0.875
	DSRCEE0600	6	9	2	0.25	1.5	33	33	4	0.875
	DSRCEE0800	8	13	2.375	0.25	1.375	48	48	4	0.875
	DSRCEE1000	10	13	2.375	0.25	1.375	65	65	4	1
	DSRCEE1200	12	13	2.375	0.25	1.375	103	103	4	1

### PROJECT INFO

CUSTOMER: \_\_\_\_\_

PROJECT: \_\_\_\_\_

ENGINEER: \_\_\_\_\_

REV.

DATE

**Metroflex**  
for pipes in motion

2323 W. HUBBARD ST.  
CHICAGO, IL 60612  
TEL: 312-738-3800  
FAX: 312-738-0415  
WWW.METRAFLEX.COM

## DOUBLE CABLESPHERE

EPDM DRILLED SPHERICAL CONNECTOR

DRAWN BY: **DKISH**

DATE: **11/5/2014**

APPROVED: **JC**

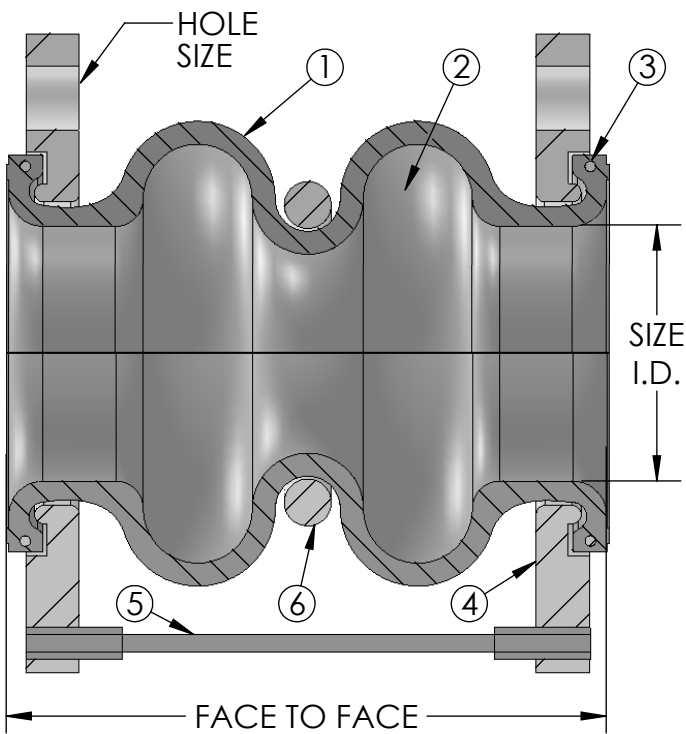
DATE: **11/5/2014**

SCALE:

NONE

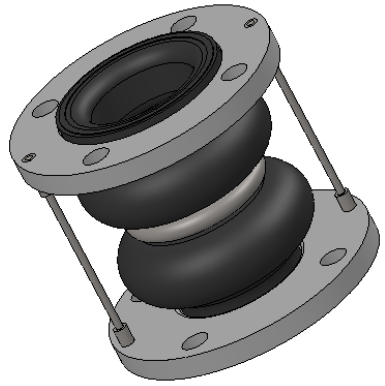
DRAWING NUMBER:

DSRC-EE



Temp. (°F)	Pressure (PSI)
170°	225
180°	200
190°	175
200°	150
210°	125
220°	100
230°	75

MAXIMUM WORKING TEMPERATURE 230°F



**LEAD FREE**

The wetted surface of this product contacted by consumable water contains less than one quarter of one percent (0.25%) of lead by weight. Material complies with state codes and standards, where applicable, requiring reduced lead content.

ITEM	PART NAME	MATERIAL
1	COVER	NEOPRENE
2	TUBE	NEOPRENE
3	ANCHOR WIRE	GALV. STEEL
4	FLANGE	GALV. STEEL, 150#, DRILLED
5	CABLE	GALV. STEEL AIRCRAFT CABLE
6	ROOT RING	STEEL

OTHER MATERIALS AND SIZES AVAILABLE

Notes:  
 For installation instructions go to [www.metroflex.com](http://www.metroflex.com).  
 Joint must be installed at its neutral length, and the bolts properly torqued.  
 Not suitable for steam or vacuum applications.

Qty	Part Number	Size I.D. (in)	F/F (in)	MOVEMENT CAPABILITY				Weight (Lbs)	No. Cables	Hole Size
				AXIAL		DEFLECTION				
				Comp. (in)	Elong. (in)	Lateral (in)	Angular (Deg)			
	DSRCNN0200	2	7	2	0.1875	1	10	10	2	0.75
	DSRCNN0250	2.5	7	2	0.1875	1	13	13	2	0.75
	DSRCNN0300	3	7	2	0.1875	1	14	14	2	0.75
	DSRCNN0400	4	9	2	0.25	1.5	15	15	2	0.75
	DSRCNN0500	5	9	2	0.25	1.5	24	24	4	0.875
	DSRCNN0600	6	9	2	0.25	1.5	33	33	4	0.875
	DSRCNN0800	8	13	2.375	0.25	1.375	48	48	4	0.875
	DSRCNN1000	10	13	2.375	0.25	1.375	65	65	4	1
	DSRCNN1200	12	13	2.375	0.25	1.375	103	103	4	1

PROJECT INFO

---



---



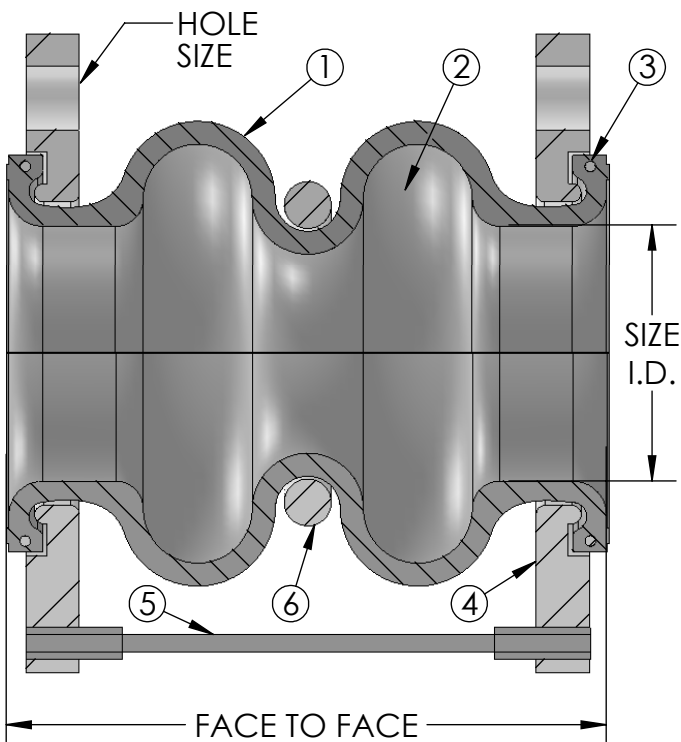
---

CUSTOMER: \_\_\_\_\_

PROJECT: \_\_\_\_\_

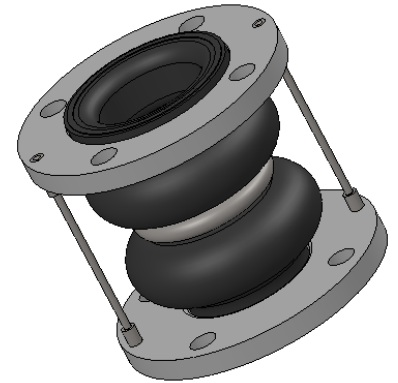
ENGINEER: \_\_\_\_\_

REV.	DATE
2323 W. HUBBARD ST. CHICAGO, IL 60612 TEL: 312-738-3800 FAX: 312-738-0415 WWW.METRAFLEX.COM	
<b>DOUBLE CABLESPHERE</b> NEOPRENE DRILLED SPHERICAL CONNECTOR	
DRAWN BY: DKISH	DATE: 1/20/2014
APPROVED: JC	DATE: 1/20/2014
SCALE: NONE	DRAWING NUMBER: DSRC-NN



Temp. (°F)	Pressure (PSI)
170°	225
180°	200
190°	175
200°	150
210°	125
220°	100
230°	75

MAXIMUM WORKING TEMPERATURE 230°F



### LEAD FREE

The wetted surface of this product contacted by consumable water contains less than one quarter of one percent (0.25%) of lead by weight. Material complies with state codes and standards, where applicable, requiring reduced lead content.

ITEM	PART NAME	MATERIAL
1	COVER	BUTYL
2	TUBE	BUTYL
3	ANCHOR WIRE	GALV. STEEL
4	FLANGE	GALV. STEEL, 150#, DRILLED
5	CABLE	GALV. STEEL AIRCRAFT CABLE
6	ROOT RING	STEEL

OTHER MATERIALS AND SIZES AVAILABLE

#### Notes:

For installation instructions go to [www.metroflex.com](http://www.metroflex.com). Joint must be installed at its neutral length, and the bolts properly torqued. Not suitable for steam or vacuum applications.

Qty	Part Number	Size I.D. (in)	F/F (in)	MOVEMENT CAPABILITY				Weight (Lbs)	No. Cables	Hole Size
				AXIAL		DEFLECTION				
				Comp. (in)	Elong. (in)	Lateral (in)	Angular (Deg)			
	DSRCBB0200	2	7	2	0.1875	1	10	10	2	0.75
	DSRCBB0250	2.5	7	2	0.1875	1	13	13	2	0.75
	DSRCBB0300	3	7	2	0.1875	1	14	14	2	0.75
	DSRCBB0400	4	9	2	0.25	1.5	15	15	2	0.75
	DSRCBB0500	5	9	2	0.25	1.5	24	24	4	0.875
	DSRCBB0600	6	9	2	0.25	1.5	33	33	4	0.875
	DSRCBB0800	8	13	2.375	0.25	1.375	48	48	4	0.875
	DSRCBB1000	10	13	2.375	0.25	1.375	65	65	4	1
	DSRCBB1200	12	13	2.375	0.25	1.375	103	103	4	1

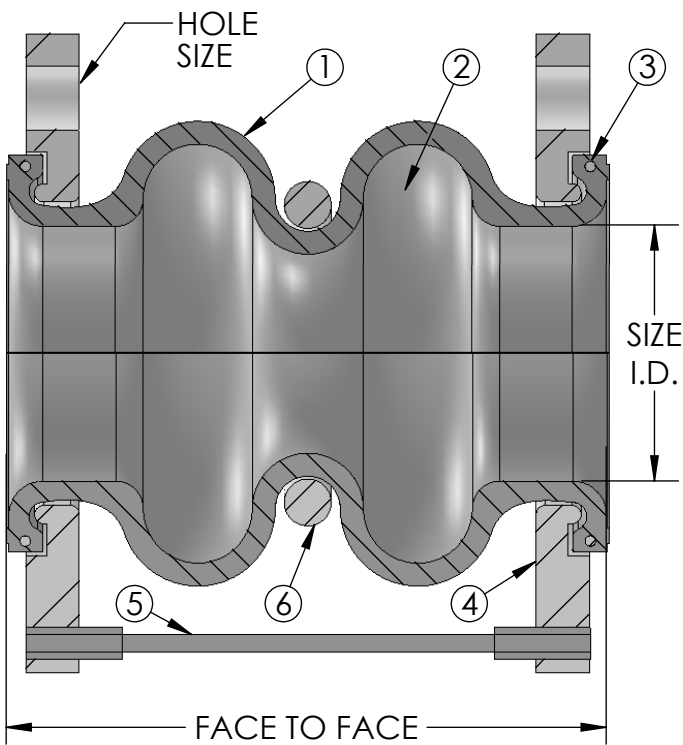
PROJECT INFO

CUSTOMER: \_\_\_\_\_

PROJECT: \_\_\_\_\_

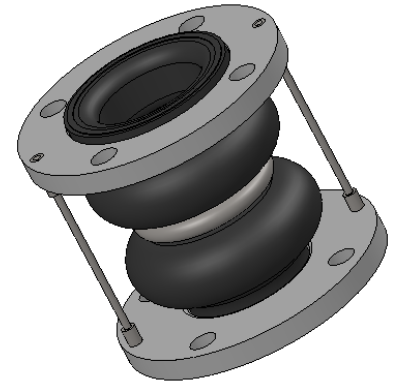
ENGINEER: \_\_\_\_\_

REV.	DATE
2323 W. HUBBARD ST. CHICAGO, IL 60612 TEL: 312-738-3800 FAX: 312-738-0415 WWW.METRAFLEX.COM	
<h2>DOUBLE CABLESPHERE</h2> <h3>BUTYL DRILLED SPHERICAL CONNECTOR</h3>	
DRAWN BY: DKISH	DATE: 1/20/2014
APPROVED: JC	DATE: 1/20/2014
SCALE: NONE	DRAWING NUMBER: DSRC-BB



Temp. (°F)	Pressure (PSI)
170°	225
180°	200
190°	175
200°	150
210°	125
220°	100
230°	75

MAXIMUM WORKING TEMPERATURE 230°F



### LEAD FREE

The wetted surface of this product contacted by consumable water contains less than one quarter of one percent (0.25%) of lead by weight. Material complies with state codes and standards, where applicable, requiring reduced lead content.

ITEM	PART NAME	MATERIAL
1	COVER	NEOPRENE
2	TUBE	NITRILE
3	ANCHOR WIRE	GALV. STEEL
4	FLANGE	GALV. STEEL, 150#, DRILLED
5	CABLE	GALV. STEEL AIRCRAFT CABLE
6	ROOT RING	CARBON STEEL

OTHER MATERIALS AND SIZES AVAILABLE

### Notes:

For installation instructions go to [www.metroflex.com](http://www.metroflex.com). Joint must be installed at its neutral length, and the bolts properly torqued. Not suitable for steam or vacuum applications.

Qty	Part Number	Size I.D. (in)	F/F (in)	MOVEMENT CAPABILITY				Weight (Lbs)	No. Cables	Hole Size
				AXIAL		DEFLECTION				
				Comp. (in)	Elong. (in)	Lateral (in)	Angular (Deg)			
	DSRCPN0200	2	7	2	0.1875	1	10	10	2	0.75
	DSRCPN0250	2.5	7	2	0.1875	1	13	13	2	0.75
	DSRCPN0300	3	7	2	0.1875	1	14	14	2	0.75
	DSRCPN0400	4	9	2	0.25	1.5	15	15	2	0.75
	DSRCPN0500	5	9	2	0.25	1.5	24	24	4	0.875
	DSRCPN0600	6	9	2	0.25	1.5	33	33	4	0.875
	DSRCPN0800	8	13	2.375	0.25	1.375	48	48	4	0.875
	DSRCPN1000	10	13	2.375	0.25	1.375	65	65	4	1
	DSRCPN1200	12	13	2.375	0.25	1.375	103	103	4	1

PROJECT INFO

CUSTOMER: \_\_\_\_\_

PROJECT: \_\_\_\_\_

ENGINEER: \_\_\_\_\_

REV.	DATE
2323 W. HUBBARD ST. CHICAGO, IL 60612 TEL: 312-738-3800 FAX: 312-738-0415 WWW.METRAFLEX.COM	
<h2>DOUBLE CABLESPHERE</h2> <h3>NITRILE DRILLED SPHERICAL CONNECTOR</h3>	
DRAWN BY: DKISH	DATE: 1/20/2014
APPROVED: JC	DATE: 1/20/2014
SCALE: NONE	DRAWING NUMBER: DSRC-PN