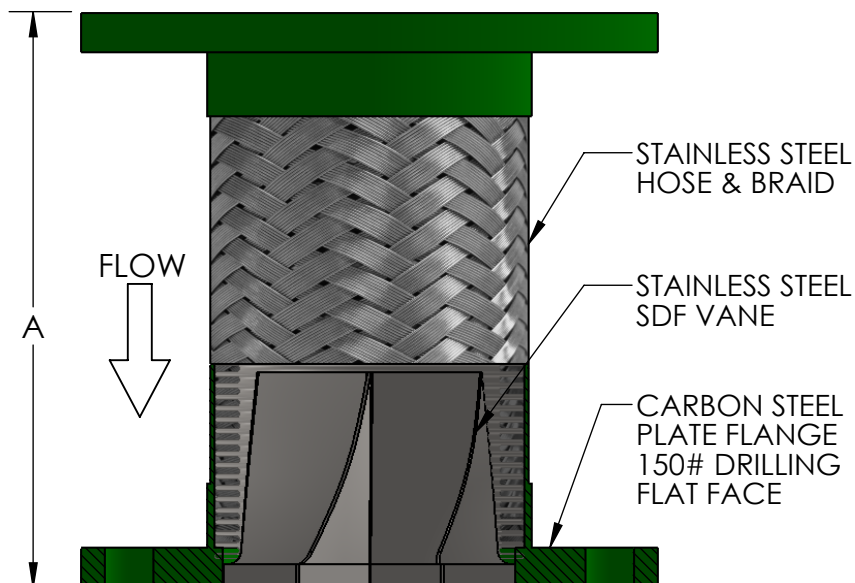
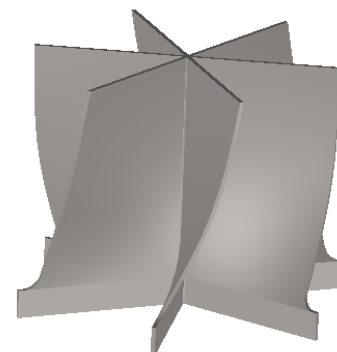
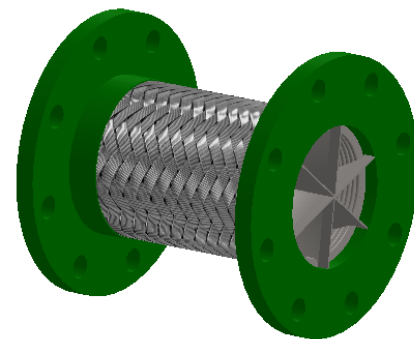


LONG RADIUS
DESIGNED TO BE INSTALLED
IMMEDIATELY UP-STREAM OF A
LONG RADIUS 90° ELBOW.



Qty	Part Number	Size (in)	A (in)	PSI @ 70°F	Project Info
	SDFL0200	2	9	455	
	SDFL0250	2-1/2	9	345	
	SDFL0300	3	9	289	
	SDFL0400	4	9	300	
	SDFL0500	5	11	220	
	SDFL0600	6	11	200	
	SDFL0800	8	12	190	
	SDFL1000	10	13	150	
	SDFL1200	12	14	125	
	SDFL1400	14	14	105	

*For safe working pressure above 70°F,
multiply pressure shown at 70°F by
correction factor of required temp.

Temperature (°F)	Factor
70	1.00
200	0.92
300	0.86
400	0.82
500	0.77
600	0.73

MAX PERMANENT OFFSET FROM CENTERLINE - 3/8"
MAX INTERMITTENT OFFSET FROM CENTERLINE - 1/8"

LEAD FREE

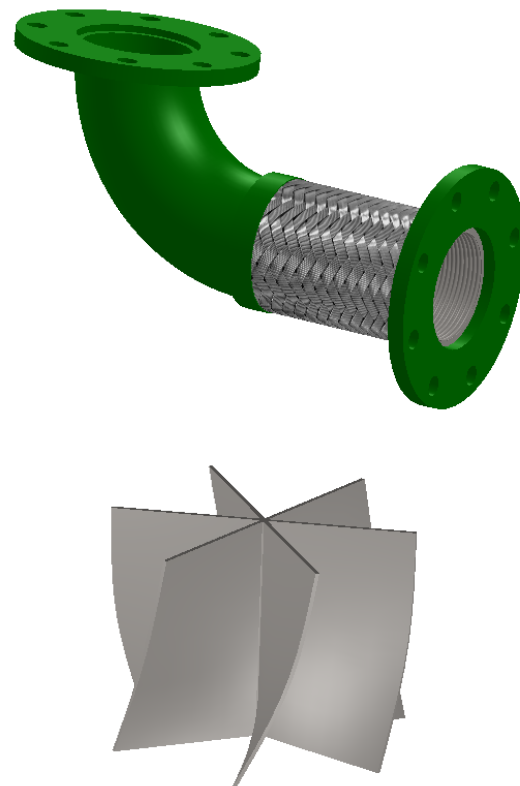
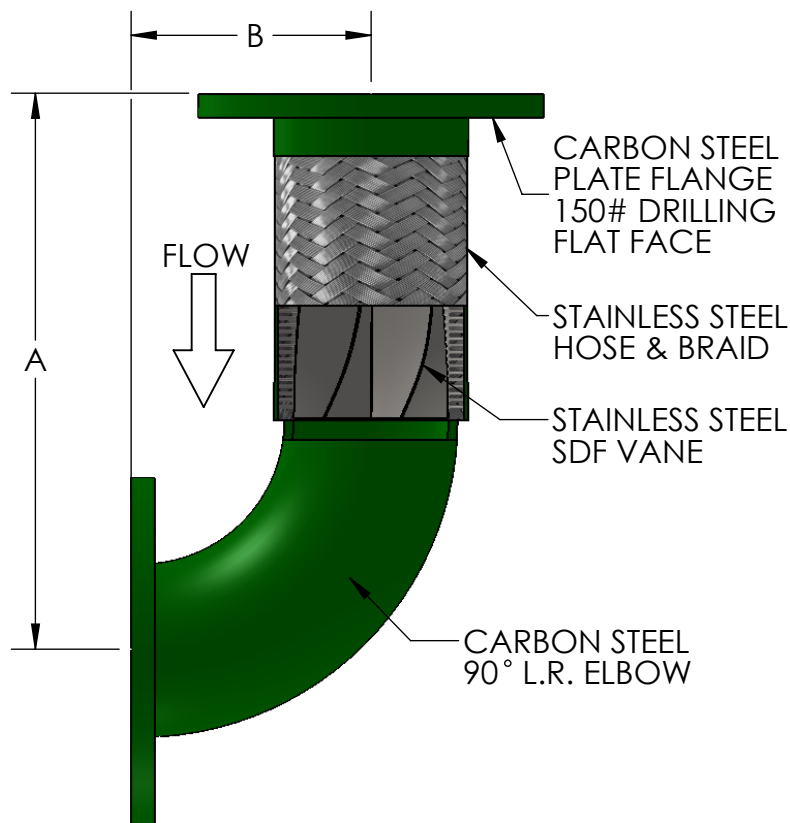
The wetted surface of this product contacted by consumable water contains less than one quarter of one percent (0.25%) of lead by weight. Material complies with state codes and standards, where applicable, requiring reduced lead content.

CUSTOMER: _____

PROJECT: _____

ENGINEER: _____

REV. 1	VANE STAINLESS	DATE 12/3/2013
		2323 W. HUBBARD ST. CHICAGO, IL 60612 TEL: 312-738-3800 FAX: 312-738-0415 WWW.METRAFLEX.COM
Suction Diffuser Flex with 150# Plate Flanges for Connecting to L.R. Elbow		
DRAWN BY: DKISH		DATE: 11/22/2013
APPROVED: JC		DATE: 11/22/2013
SCALE: NONE	DRAWING NUMBER: SDFL	



Qty	Part Number	Size (in)	A (in)	B (in)	PSI @ 70°F	Project Info
	SDFL900200	2	11-1/2	3-1/4	455	
	SDFL900250	2-1/2	12-1/4	4	345	
	SDFL900300	3	13	4-3/4	289	
	SDFL900400	4	14-1/2	6-1/4	300	
	SDFL900500	5	18	7-3/4	220	
	SDFL900600	6	19-1/2	9-1/4	200	
	SDFL900800	8	23-1/4	12-1/4	190	
	SDFL901000	10	27-1/4	15-1/4	150	
	SDFL901200	12	31-1/4	18-1/4	125	
	SDFL901400	14	34-1/4	21-1/4	105	

MAX PERMANENT OFFSET FROM CENTERLINE - 3/8"
 MAX INTERMITTENT OFFSET FROM CENTERLINE - 1/8"

*For safe working pressure above 70°F,
 multiply pressure shown at 70°F by
 correction factor of required temp.

Temperature (°F)	Factor
70	1.00
200	0.92
300	0.86
400	0.82
500	0.77
600	0.73

LEAD FREE

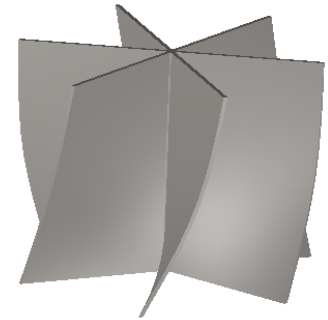
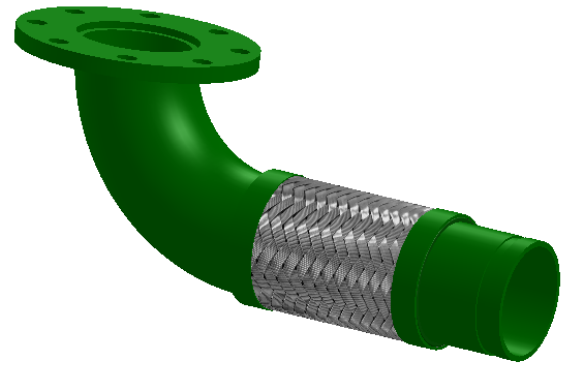
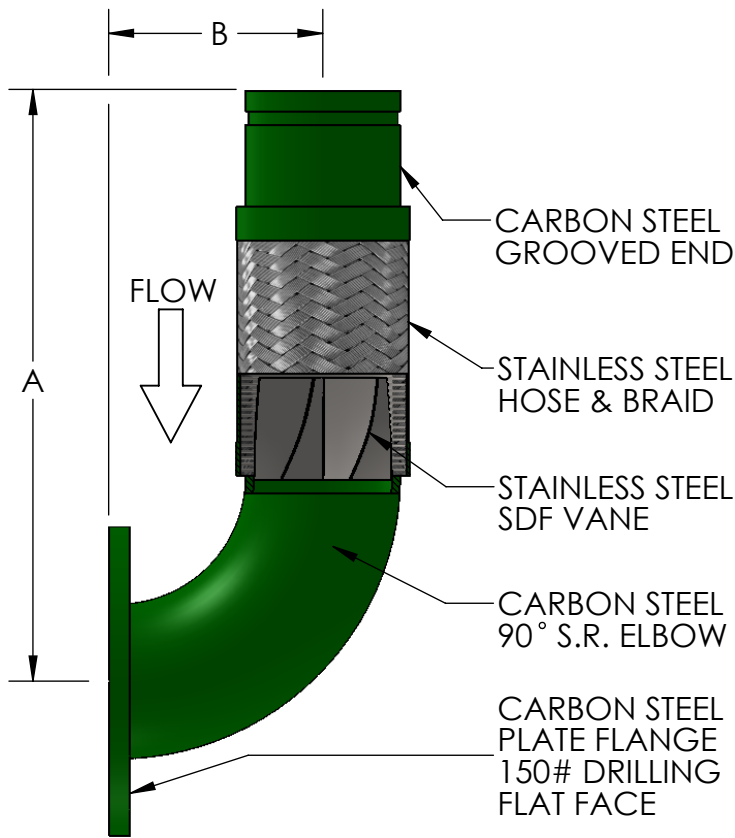
The wetted surface of this product contacted by consumable water contains less than one quarter of one percent (0.25%) of lead by weight. Material complies with state codes and standards, where applicable, requiring reduced lead content.

CUSTOMER: _____

PROJECT: _____

ENGINEER: _____

REV. 1	VANE STAINLESS	DATE 12/3/2013
		2323 W. HUBBARD ST. CHICAGO, IL 60612 TEL: 312-738-3800 FAX: 312-738-0415 WWW.METRAFLEX.COM
Suction Diffuser Flex with 150# Plate Flanges and a L.R. Elbow		
DRAWN BY: DKISH		DATE: 11/22/2013
APPROVED: JC		DATE: 11/22/2013
SCALE: NONE	DRAWING NUMBER: SDFL90	



Qty	Part Number	Size (in)	A (in)	B (in)	PSI @ 70°F	Project Info
	SDFL90GF0200	2	14-1/4	3-1/4	455	
	SDFL90GF0250	2-1/2	15	4	345	
	SDFL90GF0300	3	15-3/4	4-3/4	289	
	SDFL90GF0400	4	17-1/4	6-1/4	300	
	SDFL90GF0500	5	20-3/4	7-3/4	220	
	SDFL90GF0600	6	22-1/4	9-1/4	200	
	SDFL90GF0800	8	26-3/4	12-1/4	190	
	SDFL90GF1000	10	30-3/4	15-1/4	150	
	SDFL90GF1200	12	34-3/4	18-1/4	125	
	SDFL90GF1400	14	37-3/4	21-1/4	105	

MAX PERMANENT OFFSET FROM CENTERLINE - 3/8"
 MAX INTERMITTENT OFFSET FROM CENTERLINE - 1/8"

*For safe working pressure above 70°F,
 multiply pressure shown at 70°F by
 correction factor of required temp.

Temperature (°F)	Factor
70	1.00
200	0.92
300	0.86
400	0.82
500	0.77
600	0.73

LEAD FREE

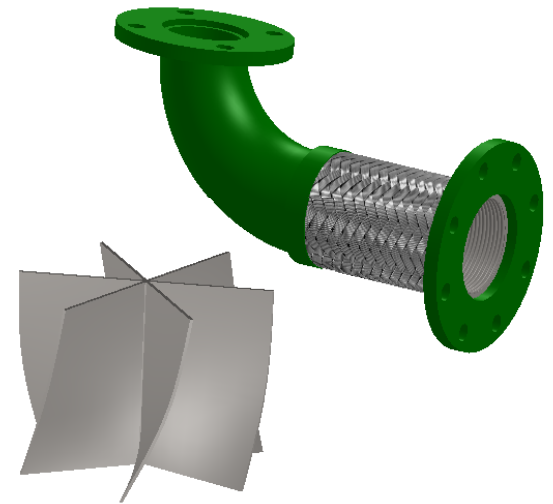
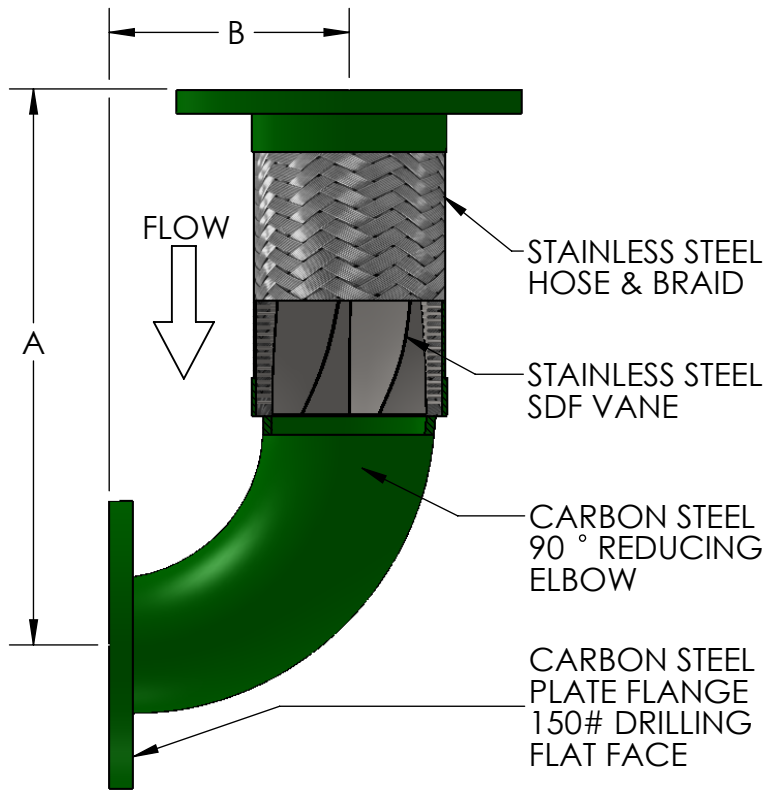
The wetted surface of this product contacted by consumable water contains less than one quarter of one percent (0.25%) of lead by weight. Material complies with state codes and standards, where applicable, requiring reduced lead content.

CUSTOMER: _____

PROJECT: _____

ENGINEER: _____

REV. 1	VANE STAINLESS	DATE 12/3/2013
		2323 W. HUBBARD ST. CHICAGO, IL 60612 TEL: 312-738-3800 FAX: 312-738-0415 WWW.METRAFLEX.COM
Suction Diffuser Flex with Grooved x 150# Plate Flange and a L.R. Elbow		
DRAWN BY: DKISH		DATE: 11/22/2013
APPROVED: JC		DATE: 11/22/2013
SCALE: NONE	DRAWING NUMBER: SDFL90GF	



*For safe working pressure above 70°F, multiply pressure shown at 70°F by correction factor of required temp.

Temperature (°F)	Factor
70	1.00
200	0.92
300	0.86
400	0.82
500	0.77
600	0.73

Qty	Part Number	Size (in)	A (in)	B (in)	PSI @ 70°F	Project Info
	SDFL90R2502	2-1/2 X 2	12-1/4	4	345	
	SDFL90R0302	3 X 2	13	4-3/4	289	
	SDFL90R0325	3 X 2-1/2	13	4-3/4	289	
	SDFL90R0402	4 X 2	14-1/2	6-1/4	300	
	SDFL90R0425	4 X 2-1/2	14-1/2	6-1/4	300	
	SDFL90R0403	4 X 3	14-1/2	6-1/4	300	
	SDFL90R0525	5 X 2-1/2	18	7-3/4	220	
	SDFL90R0503	5 X 3	18	7-3/4	220	
	SDFL90R0504	5 X 4	18	7-3/4	220	
	SDFL90R0603	6 X 3	19-1/2	9-1/4	200	
	SDFL90R0604	6 X 4	19-1/2	9-1/4	200	
	SDFL90R0605	6 X 5	19-1/2	9-1/4	200	
	SDFL90R0804	8 X 4	23-1/4	12-1/4	190	
	SDFL90R0805	8 X 5	23-1/4	12-1/4	190	
	SDFL90R0806	8 X 6	23-1/4	12-1/4	190	
	SDFL90R1006	10 X 6	27-1/4	15-1/4	150	
	SDFL90R1008	10 X 8	27-1/4	15-1/4	150	
	SDFL90R1210	12 X 10	31-1/4	18-1/4	125	

MAX PERMANENT OFFSET FROM CENTERLINE - 3/8"
MAX INTERMITTENT OFFSET FROM CENTERLINE - 1/8"

LEAD FREE

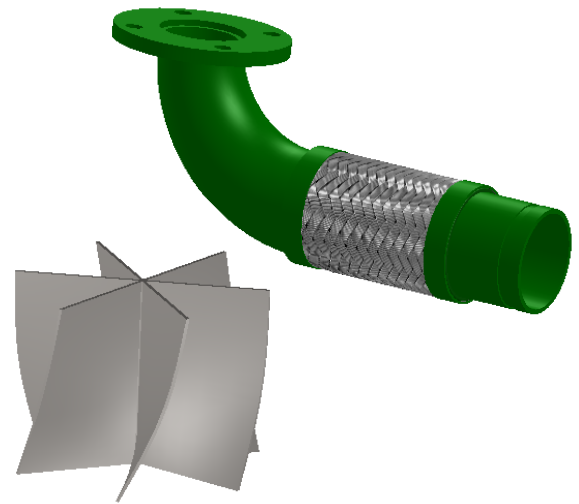
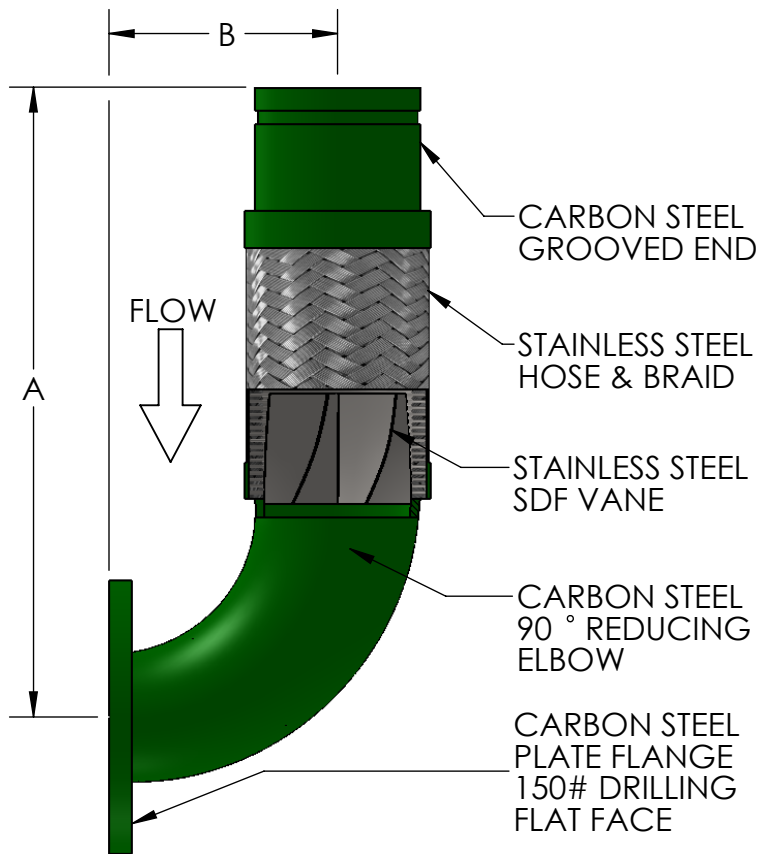
The wetted surface of this product contacted by consumable water contains less than one quarter of one percent (0.25%) of lead by weight. Material complies with state codes and standards, where applicable, requiring reduced lead content.

CUSTOMER: _____

PROJECT: _____

ENGINEER: _____

REV. 1	VANE STAINLESS	DATE 12/3/2013
		2323 W. HUBBARD ST. CHICAGO, IL 60612 TEL: 312-738-3800 FAX: 312-738-0415 WWW.METRAFLEX.COM
Suction Diffuser Flex with 150# Plate Flanges and a 90° Reducing Elbow		
DRAWN BY: DKISH		DATE: 11/22/2013
APPROVED: JC		DATE: 11/22/2013
SCALE: NONE	DRAWING NUMBER: SDFL90R	



*For safe working pressure above 70°F, multiply pressure shown at 70°F by correction factor of required temp.

Temperature (°F)	Factor
70	1.00
200	0.92
300	0.86
400	0.82
500	0.77
600	0.73

Qty	Part Number	Size (in)	A (in)	B (in)	PSI @ 70°F	Project Info
	SDFL90RGF2502	2-1/2 X 2	15	4	345	
	SDFL90RGF0302	3 X 2	15-3/4	4-3/4	289	
	SDFL90RGF0325	3 X 2-1/2	15-3/4	4-3/4	289	
	SDFL90RGF0402	4 X 2	17-1/4	6-1/4	300	
	SDFL90RGF0425	4 X 2-1/2	17-1/4	6-1/4	300	
	SDFL90RGF0403	4 X 3	17-1/4	6-1/4	300	
	SDFL90RGF0525	5 X 2-1/2	20-3/4	7-3/4	220	
	SDFL90RGF0503	5 X 3	20-3/4	7-3/4	220	
	SDFL90RGF0504	5 X 4	20-3/4	7-3/4	220	
	SDFL90RGF0603	6 X 3	22-1/4	9-1/4	200	
	SDFL90RGF0604	6 X 4	22-1/4	9-1/4	200	
	SDFL90RGF0605	6 X 5	22-1/4	9-1/4	200	
	SDFL90RGF0804	8 X 4	26-3/4	12-1/4	190	
	SDFL90RGF0805	8 X 5	26-3/4	12-1/4	190	
	SDFL90RGF0806	8 X 6	26-3/4	12-1/4	190	
	SDFL90RGF1006	10 X 6	30-3/4	15-1/4	150	
	SDFL90RGF1008	10 X 8	30-3/4	15-1/4	150	
	SDFL90RGF1210	12 X 10	34-3/4	18-1/4	125	

MAX PERMANENT OFFSET FROM CENTERLINE - 3/8"
MAX INTERMITTENT OFFSET FROM CENTERLINE - 1/8"

LEAD FREE

The wetted surface of this product contacted by consumable water contains less than one quarter of one percent (0.25%) of lead by weight. Material complies with state codes and standards, where applicable, requiring reduced lead content.

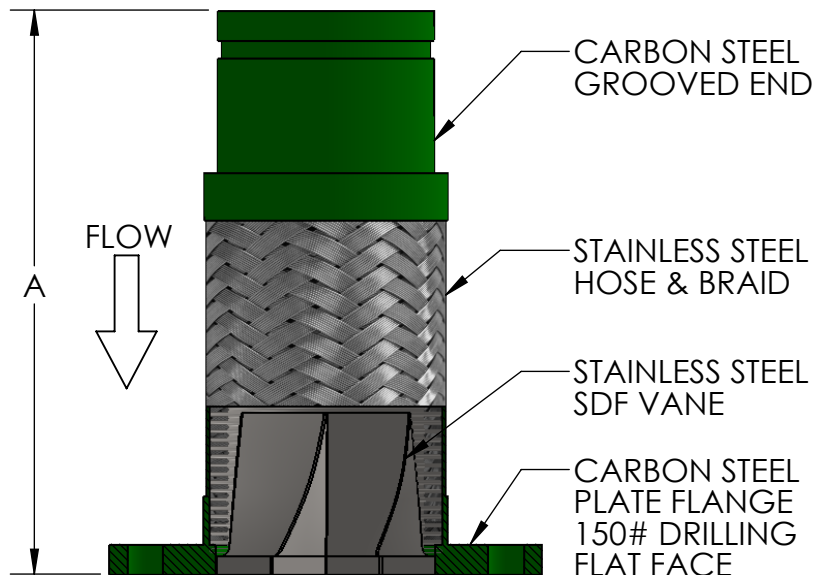
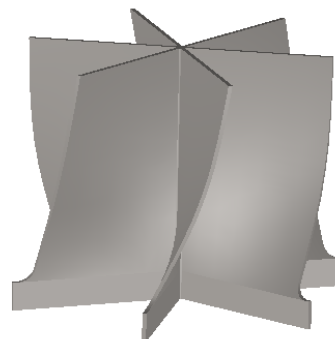
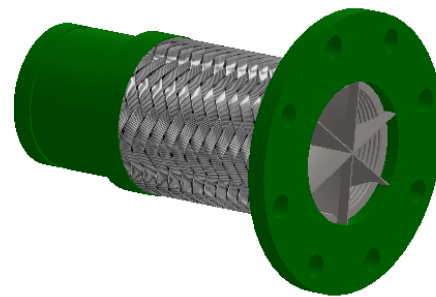
CUSTOMER: _____

PROJECT: _____

ENGINEER: _____

REV. 1	VANE STAINLESS	DATE 12/3/2013
		2323 W. HUBBARD ST. CHICAGO, IL 60612 TEL: 312-738-3800 FAX: 312-738-0415 WWW.METRAFLEX.COM
Suction Diffuser Flex with Grooved x 150# Plate Flange and a 90° Reducing Elbow		
DRAWN BY: DKISH		DATE: 11/22/2013
APPROVED: JC		DATE: 11/22/2013
SCALE: NONE	DRAWING NUMBER: SDFL90RGF	

LONG RADIUS
DESIGNED TO BE INSTALLED
IMMEDIATELY UP-STREAM OF A
LONG RADIUS 90° ELBOW.



Qty	Part Number	Size (in)	A (in)	PSI @ 70°F	Project Info
	SDFLGF0200	2	11-3/4	455	
	SDFLGF0250	2-1/2	11-3/4	345	
	SDFLGF0300	3	11-3/4	289	
	SDFLGF0400	4	11-3/4	300	
	SDFLGF0500	5	13-1/2	220	
	SDFLGF0600	6	13-1/2	200	
	SDFLGF0800	8	15-1/4	190	
	SDFLGF1000	10	16-1/4	150	
	SDFLGF1200	12	17-1/4	125	
	SDFLGF1400	14	17-1/4	105	

MAX PERMANENT OFFSET FROM CENTERLINE - 3/8"
MAX INTERMITTENT OFFSET FROM CENTERLINE - 1/8"

*For safe working pressure above 70°F,
multiply pressure shown at 70°F by
correction factor of required temp.

Temperature (°F)	Factor
70	1.00
200	0.92
300	0.86
400	0.82
500	0.77
600	0.73

LEAD FREE

The wetted surface of this product contacted by consumable water contains less than one quarter of one percent (0.25%) of lead by weight. Material complies with state codes and standards, where applicable, requiring reduced lead content.

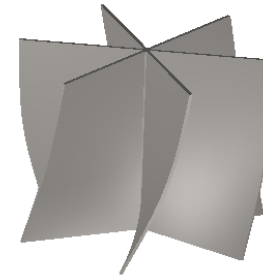
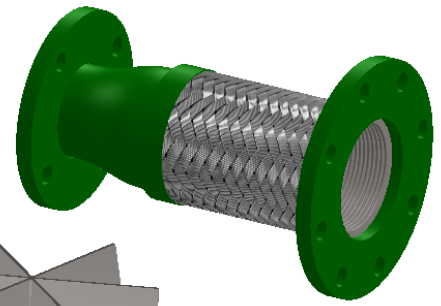
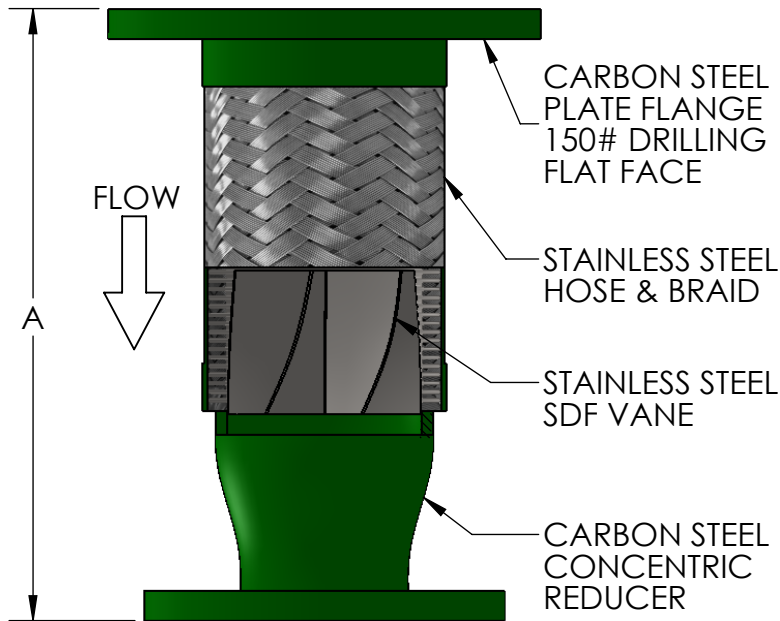
CUSTOMER: _____

PROJECT: _____

ENGINEER: _____

REV. 1	VANE STAINLESS	DATE 12/3/2013
		2323 W. HUBBARD ST. CHICAGO, IL 60612 TEL: 312-738-3800 FAX: 312-738-0415 WWW.METRAFLEX.COM
Suction Diffuser Flex with Grooved End x 150# Plate Flange for Connecting to L.R. Elbow		
DRAWN BY: DKISH		DATE: 11/22/2013
APPROVED: JC		DATE: 11/22/2013
SCALE: NONE	DRAWING NUMBER: SDFLGF	

LONG RADIUS
 DESIGNED TO BE INSTALLED
 IMMEDIATELY UP-STREAM OF A
 LONG RADIUS 90° ELBOW.



*For safe working pressure above 70°F,
 multiply pressure shown at 70°F by
 correction factor of required temp.

Temperature (°F)	Factor
70	1.00
200	0.92
300	0.86
400	0.82
500	0.77
600	0.73

Qty	Part Number	Size (in)	A (in)	PSI @ 70°F	Project Info
	SDFLR2502	2-1/2 X 2	12-1/4	345	
	SDFLR0302	3 X 2	12-1/4	289	
	SDFLR0325	3 X 2-1/2	12-1/4	289	
	SDFLR0402	4 X 2	12-3/4	300	
	SDFLR0425	4 X 2-1/2	12-3/4	300	
	SDFLR0403	4 X 3	12-3/4	300	
	SDFLR0525	5 X 2-1/2	15-3/4	220	
	SDFLR0503	5 X 3	15-3/4	220	
	SDFLR0504	5 X 4	15-3/4	220	
	SDFLR0603	6 X 3	16-1/4	200	
	SDFLR0604	6 X 4	16-1/4	200	
	SDFLR0605	6 X 5	16-1/4	200	
	SDFLR0804	8 X 4	17-1/2	190	
	SDFLR0805	8 X 5	17-1/2	190	
	SDFLR0806	8 X 6	17-1/2	190	
	SDFLR1006	10 X 6	19-1/2	150	
	SDFLR1008	10 X 8	19-1/2	150	
	SDFLR1210	12 X 10	21-1/2	125	

LEAD FREE

The wetted surface of this product contacted by consumable water contains less than one quarter of one percent (0.25%) of lead by weight. Material complies with state codes and standards, where applicable, requiring reduced lead content.

MAX PERMANENT OFFSET FROM CENTERLINE - 3/8"
 MAX INTERMITTENT OFFSET FROM CENTERLINE - 1/8"

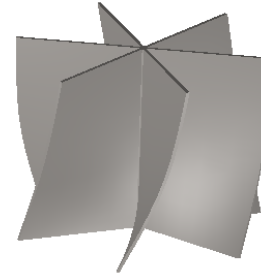
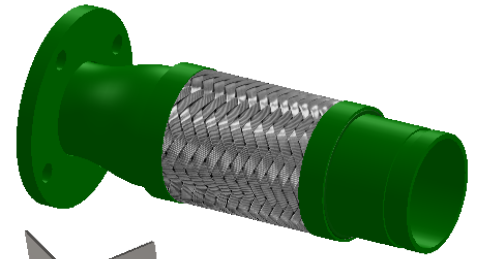
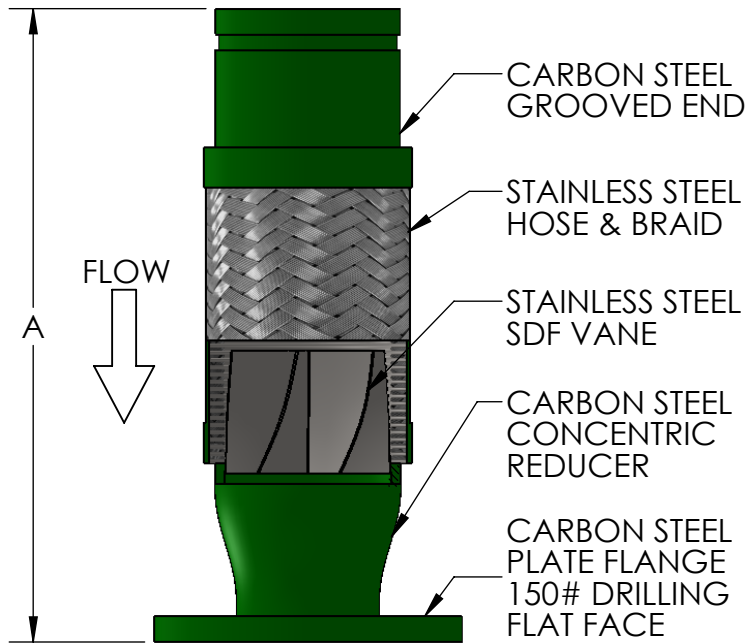
CUSTOMER: _____

PROJECT: _____

ENGINEER: _____

REV. 1	VANE STAINLESS	DATE 12/3/2013
		2323 W. HUBBARD ST. CHICAGO, IL 60612 TEL: 312-738-3800 FAX: 312-738-0415 WWW.METRAFLEX.COM
Suction Diffuser Flex with 150# Plate Flanges and a Reducer for Connecting to a L.R. Elbow		
DRAWN BY: DKISH		DATE: 11/22/2013
APPROVED: JC		DATE: 11/22/2013
SCALE: NONE	DRAWING NUMBER: SDFLR	

LONG RADIUS
DESIGNED TO BE INSTALLED
IMMEDIATELY UP-STREAM OF A
LONG RADIUS 90° ELBOW.



*For safe working pressure above 70°F,
multiply pressure shown at 70°F by
correction factor of required temp.

Temperature (°F)	Factor
70	1.00
200	0.92
300	0.86
400	0.82
500	0.77
600	0.73

Qty	Part Number	Size (in)	A (in)	PSI @ 70°F	Project Info
	SDFLRGF2502	2-1/2 X 2	15	345	
	SDFLRGF0302	3 X 2	15	289	
	SDFLRGF0325	3 X 2-1/2	15	289	
	SDFLRGF0402	4 X 2	15-1/2	300	
	SDFLRGF0425	4 X 2-1/2	15-1/2	300	
	SDFLRGF0403	4 X 3	15-1/2	300	
	SDFLRGF0525	5 X 2-1/2	18-1/2	220	
	SDFLRGF0503	5 X 3	18-1/2	220	
	SDFLRGF0504	5 X 4	18-1/2	220	
	SDFLRGF0603	6 X 3	19	200	
	SDFLRGF0604	6 X 4	19	200	
	SDFLRGF0605	6 X 5	19	200	
	SDFLRGF0804	8 X 4	21	190	
	SDFLRGF0805	8 X 5	21	190	
	SDFLRGF0806	8 X 6	21	190	
	SDFLRGF1006	10 X 6	23	150	
	SDFLRGF1008	10 X 8	23	150	
	SDFLRGF1210	12 X 10	25	125	

LEAD FREE

The wetted surface of this product contacted by consumable water contains less than one quarter of one percent (0.25%) of lead by weight. Material complies with state codes and standards, where applicable, requiring reduced lead content.

MAX PERMANENT OFFSET FROM CENTERLINE - 3/8"
MAX INTERMITTENT OFFSET FROM CENTERLINE - 1/8"

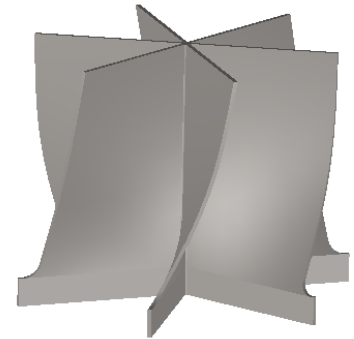
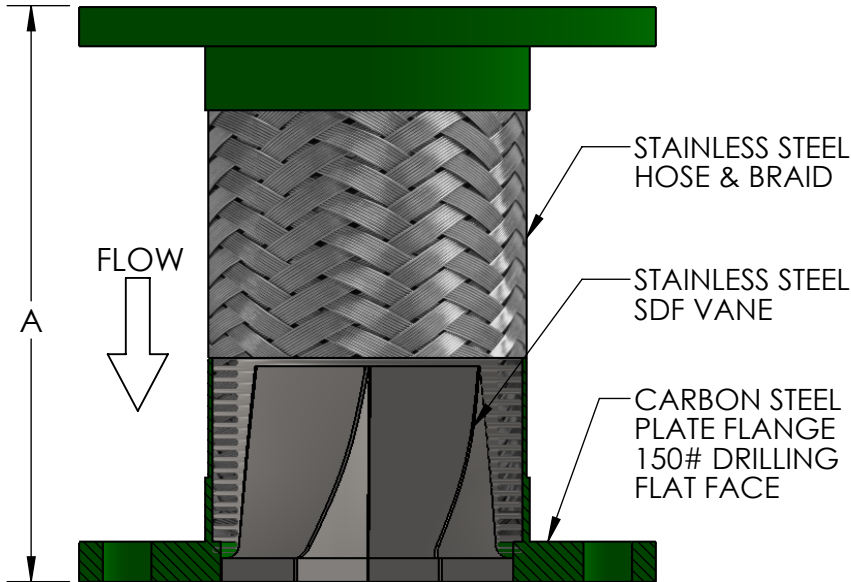
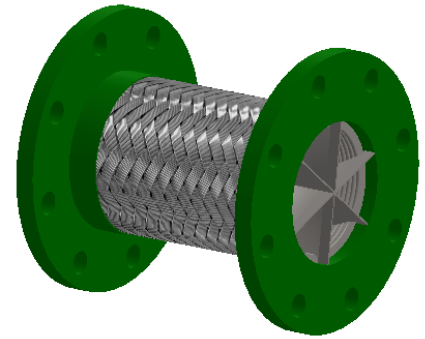
CUSTOMER: _____

PROJECT: _____

ENGINEER: _____

REV. 1	VANE STAINLESS	DATE 12/3/2013
		2323 W. HUBBARD ST. CHICAGO, IL 60612 TEL: 312-738-3800 FAX: 312-738-0415 WWW.METRAFLEX.COM
Suction Diffuser Flex with Grooved x 150# Plate Flange and Reducer for a L.R. Elbow		
DRAWN BY: DKISH		DATE: 11/22/2013
APPROVED: JC		DATE: 11/22/2013
SCALE: NONE	DRAWING NUMBER: SDFLRGF	

SHORT RADIUS
 DESIGNED TO BE INSTALLED
 IMMEDIATELY UP-STREAM OF A
 SHORT RADIUS 90° ELBOW.



Qty	Part Number	Size (in)	A (in)	PSI @ 70°F	Project Info
	SDFS0200	2	9	455	
	SDFS0250	2-1/2	9	345	
	SDFS0300	3	9	289	
	SDFS0400	4	9	300	
	SDFS0500	5	11	220	
	SDFS0600	6	11	200	
	SDFS0800	8	12	190	
	SDFS1000	10	13	150	
	SDFS1200	12	14	125	
	SDFS1400	14	14	105	

MAX PERMANENT OFFSET FROM CENTERLINE - 3/8"
 MAX INTERMITTENT OFFSET FROM CENTERLINE - 1/8"

*For safe working pressure above 70°F,
 multiply pressure shown at 70°F by
 correction factor of required temp.

Temperature (°F)	Factor
70	1.00
200	0.92
300	0.86
400	0.82
500	0.77
600	0.73

LEAD FREE

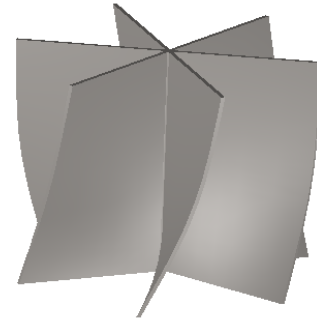
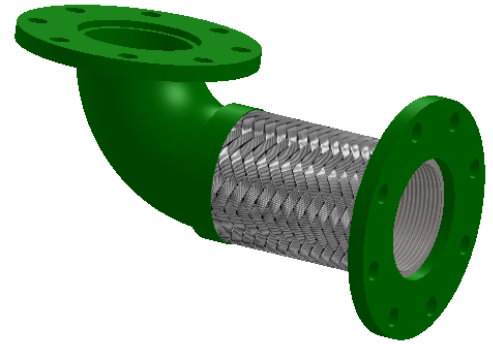
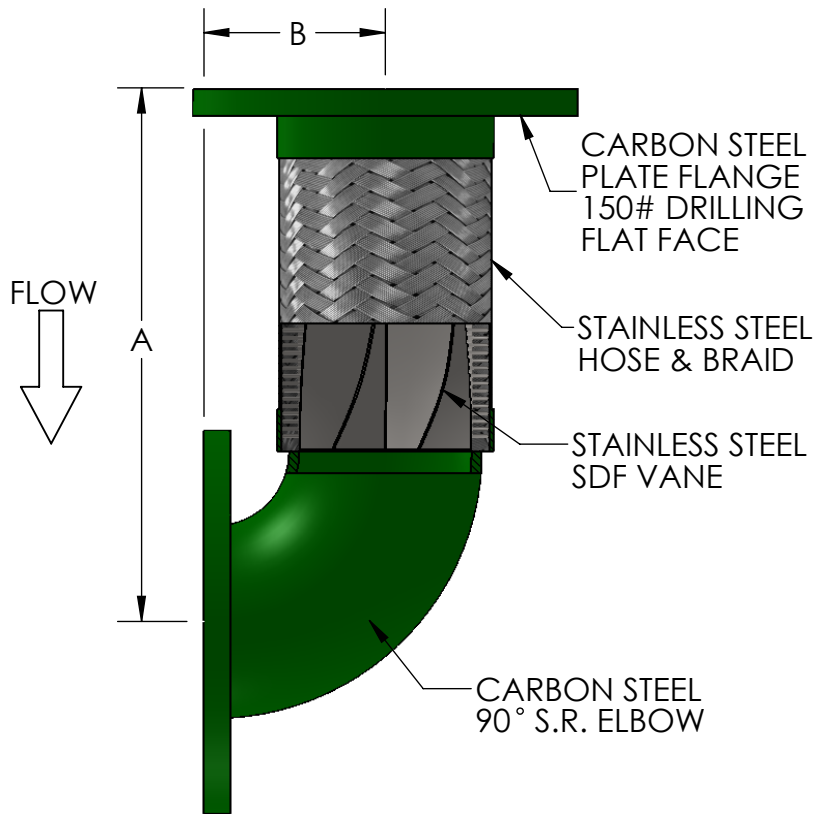
The wetted surface of this product contacted by consumable water contains less than one quarter of one percent (0.25%) of lead by weight. Material complies with state codes and standards, where applicable, requiring reduced lead content.

CUSTOMER: _____

PROJECT: _____

ENGINEER: _____

REV. 1	VANE STAINLESS	DATE 12/3/2013
		2323 W. HUBBARD ST. CHICAGO, IL 60612 TEL: 312-738-3800 FAX: 312-738-0415 WWW.METRAFLEX.COM
Suction Diffuser Flex with 150# Plate Flanges for Connecting to S.R. Elbow		
DRAWN BY: DKISH		DATE: 11/22/2013
APPROVED: JC		DATE: 11/22/2013
SCALE: NONE	DRAWING NUMBER: SDFS	



Qty	Part Number	Size (in)	A (in)	B (in)	PSI @ 70°F	Project Info
	SDFS900200	2	10-1/2	2-1/4	455	
	SDFS900250	2-1/2	11	2-3/4	345	
	SDFS900300	3	11-1/2	3-1/4	289	
	SDFS900400	4	12-1/2	4-1/4	300	
	SDFS900500	5	15-1/2	5-1/4	220	
	SDFS900600	6	16-1/2	6-1/4	200	
	SDFS900800	8	19-1/4	8-1/4	190	
	SDFS901000	10	22-1/4	10-1/4	150	
	SDFS901200	12	25-1/4	12-1/4	125	
	SDFS901400	14	27-1/4	14-1/4	105	

MAX PERMANENT OFFSET FROM CENTERLINE - 3/8"
MAX INTERMITTENT OFFSET FROM CENTERLINE - 1/8"

*For safe working pressure above 70°F,
multiply pressure shown at 70°F by
correction factor of required temp.

Temperature (°F)	Factor
70	1.00
200	0.92
300	0.86
400	0.82
500	0.77
600	0.73

LEAD FREE

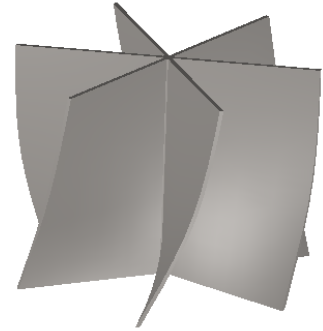
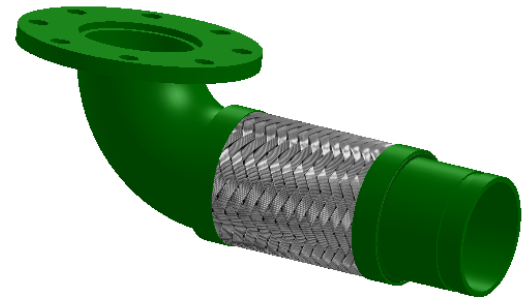
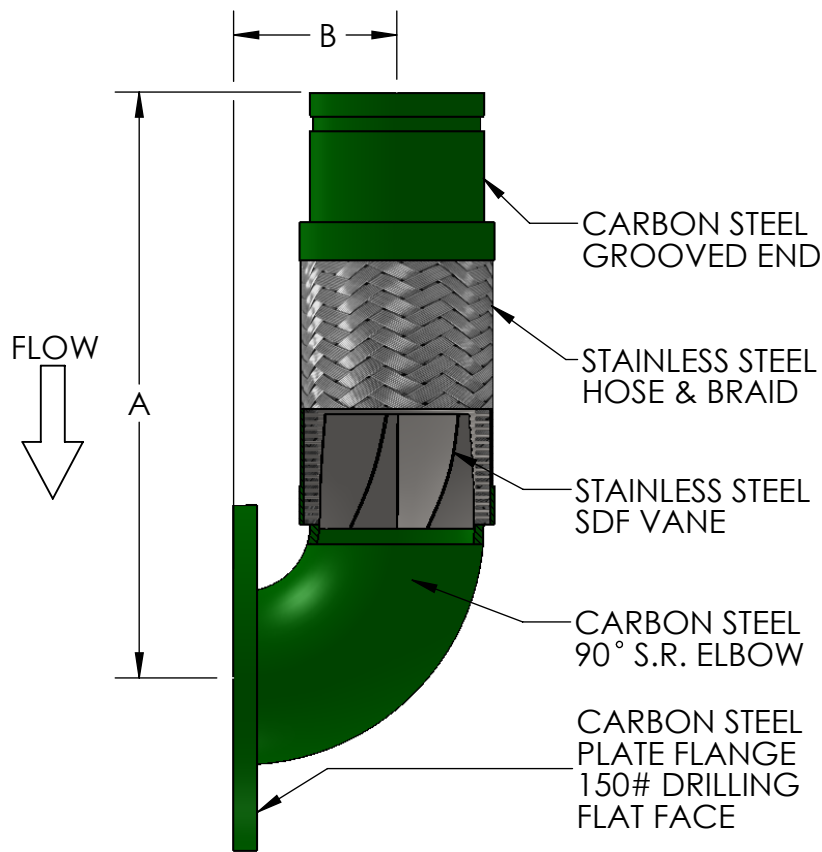
The wetted surface of this product contacted by consumable water contains less than one quarter of one percent (0.25%) of lead by weight. Material complies with state codes and standards, where applicable, requiring reduced lead content.

CUSTOMER: _____

PROJECT: _____

ENGINEER: _____

REV. 1	VANE STAINLESS	DATE 12/3/2013
		2323 W. HUBBARD ST. CHICAGO, IL 60612 TEL: 312-738-3800 FAX: 312-738-0415 WWW.METRAFLEX.COM
Suction Diffuser Flex with 150# Plate Flange and a S.R. Elbow		
DRAWN BY: DKISH		DATE: 11/22/2013
APPROVED: JC		DATE: 11/22/2013
SCALE: NONE	DRAWING NUMBER: SDFS90	



Qty	Part Number	Size (in)	A (in)	B (in)	PSI @ 70°F	Project Info
	SDFS9GF0200	2	13-1/4	2-1/4	455	
	SDFS90GF0250	2-1/2	13-3/4	2-3/4	345	
	SDFS90GF0300	3	14-1/4	3-1/4	289	
	SDFS90GF0400	4	15-1/4	4-1/4	300	
	SDFS90GF0500	5	18-1/4	5-1/4	220	
	SDFS90GF0600	6	19-1/4	6-1/4	200	
	SDFS90GF0800	8	22-3/4	8-1/4	190	
	SDFS90GF1000	10	25-3/4	10-1/4	150	
	SDFS90GF1200	12	28-3/4	12-1/4	125	
	SDFS90GF1400	14	30-3/4	14-1/4	105	

MAX PERMANENT OFFSET FROM CENTERLINE - 3/8"
 MAX INTERMITTENT OFFSET FROM CENTERLINE - 1/8"

*For safe working pressure above 70°F,
 multiply pressure shown at 70°F by
 correction factor of required temp.

Temperature (°F)	Factor
70	1.00
200	0.92
300	0.86
400	0.82
500	0.77
600	0.73

LEAD FREE

The wetted surface of this product contacted by consumable water contains less than one quarter of one percent (0.25%) of lead by weight. Material complies with state codes and standards, where applicable, requiring reduced lead content.

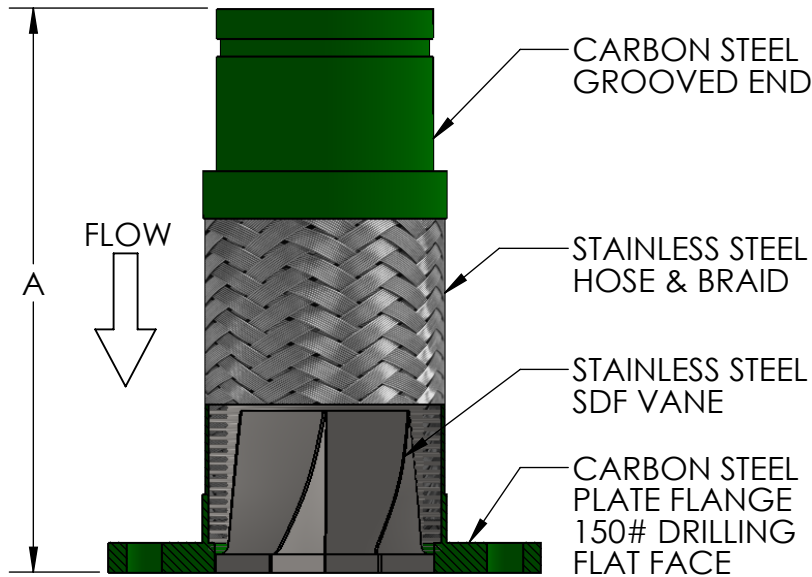
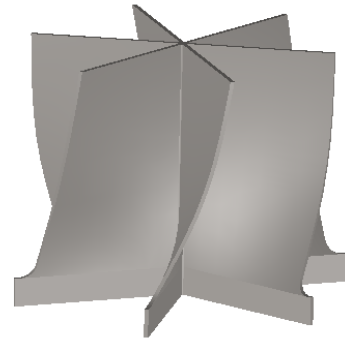
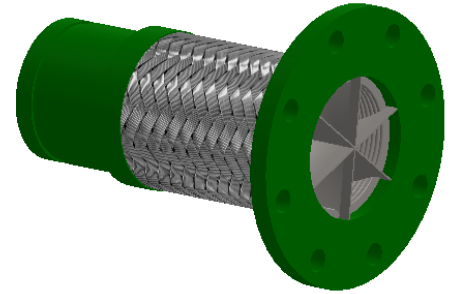
CUSTOMER: _____

PROJECT: _____

ENGINEER: _____

REV. 1	VANE STAINLESS	DATE 12/3/2013
		2323 W. HUBBARD ST. CHICAGO, IL 60612 TEL: 312-738-3800 FAX: 312-738-0415 WWW.METRAFLEX.COM
Suction Diffuser Flex with Grooved x 150# Plate Flange and a S.R. Elbow		
DRAWN BY: DKISH		DATE: 11/22/2013
APPROVED: JC		DATE: 11/22/2013
SCALE: NONE	DRAWING NUMBER: SDFS90GF	

SHORT RADIUS
DESIGNED TO BE INSTALLED
IMMEDIATELY UP-STREAM OF A
SHORT RADIUS 90° ELBOW.



Qty	Part Number	Size (in)	A (in)	PSI @ 70°F	Project Info
	SDFSGF0200	2	11-3/4	455	
	SDFSGF0250	2-1/2	11-3/4	345	
	SDFSGF0300	3	11-3/4	289	
	SDFSGF0400	4	11-3/4	300	
	SDFSGF0500	5	13-1/2	220	
	SDFSGF0600	6	13-1/2	200	
	SDFSGF0800	8	15-1/4	190	
	SDFSGF1000	10	16-1/4	150	
	SDFSGF1200	12	17-1/4	125	
	SDFSGF1400	14	17-1/4	105	

MAX PERMANENT OFFSET FROM CENTERLINE - 3/8"
MAX INTERMITTENT OFFSET FROM CENTERLINE - 1/8"

*For safe working pressure above 70°F,
multiply pressure shown at 70°F by
correction factor of required temp.

Temperature (°F)	Factor
70	1.00
200	0.92
300	0.86
400	0.82
500	0.77
600	0.73

LEAD FREE

The wetted surface of this product contacted by consumable water contains less than one quarter of one percent (0.25%) of lead by weight. Material complies with state codes and standards, where applicable, requiring reduced lead content.

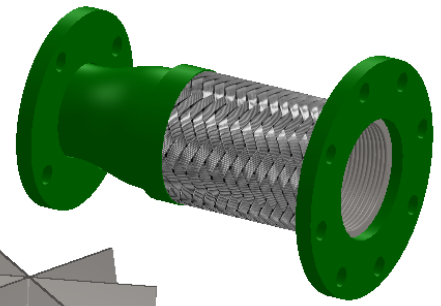
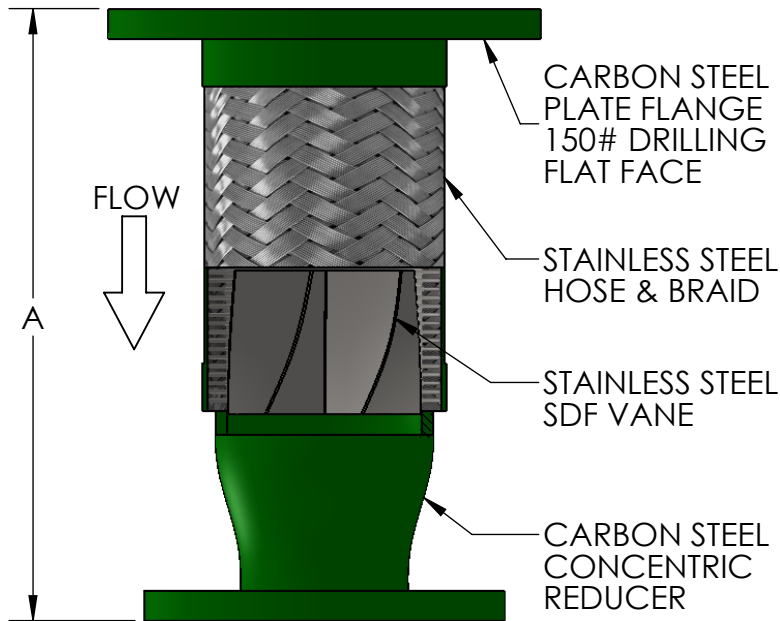
CUSTOMER: _____

PROJECT: _____

ENGINEER: _____

REV. 1	VANE STAINLESS	DATE 12/3/2013
		2323 W. HUBBARD ST. CHICAGO, IL 60612 TEL: 312-738-3800 FAX: 312-738-0415 WWW.METRAFLEX.COM
Suction Diffuser Flex with Grooved End x 150# Plate Flange for Connecting to S.R. Elbow		
DRAWN BY: DKISH		DATE: 11/22/2013
APPROVED: JC		DATE: 11/22/2013
SCALE: NONE	DRAWING NUMBER: SDFSGF	

SHORT RADIUS
 DESIGNED TO BE INSTALLED
 IMMEDIATELY UP-STREAM OF A
 SHORT RADIUS 90° ELBOW.



*For safe working pressure above 70°F,
 multiply pressure shown at 70°F by
 correction factor of required temp.

Temperature (°F)	Factor
70	1.00
200	0.92
300	0.86
400	0.82
500	0.77
600	0.73

Qty	Part Number	Size (in)	A (in)	PSI @ 70°F	Project Info
	SDFSR2502	2-1/2 X 2	12-1/4	345	
	SDFSR0302	3 X 2	12-1/4	289	
	SDFSR0325	3 X 2-1/2	12-1/4	289	
	SDFSR0402	4 X 2	12-3/4	300	
	SDFSR0425	4 X 2-1/2	12-3/4	300	
	SDFSR0403	4 X 3	12-3/4	300	
	SDFSR0525	5 X 2-1/2	15-3/4	220	
	SDFSR0503	5 X 3	15-3/4	220	
	SDFSR0504	5 X 4	15-3/4	220	
	SDFSR0603	6 X 3	16-1/4	200	
	SDFSR0604	6 X 4	16-1/4	200	
	SDFSR0605	6 X 5	16-1/4	200	
	SDFSR0804	8 X 4	17-1/2	190	
	SDFSR0805	8 X 5	17-1/2	190	
	SDFSR0806	8 X 6	17-1/2	190	
	SDFSR1006	10 X 6	19-1/2	150	
	SDFSR1008	10 X 8	19-1/2	150	
	SDFSR1210	12 X 10	21-1/2	125	

LEAD FREE

The wetted surface of this product contacted by consumable water contains less than one quarter of one percent (0.25%) of lead by weight. Material complies with state codes and standards, where applicable, requiring reduced lead content.

MAX PERMANENT OFFSET FROM CENTERLINE - 3/8"
 MAX INTERMITTENT OFFSET FROM CENTERLINE - 1/8"

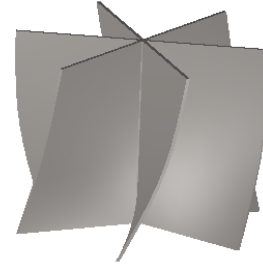
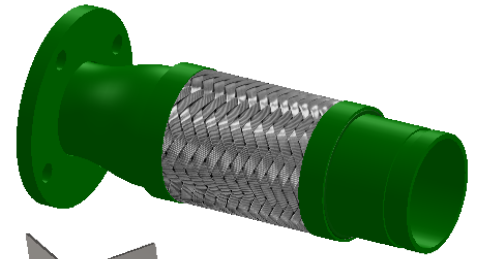
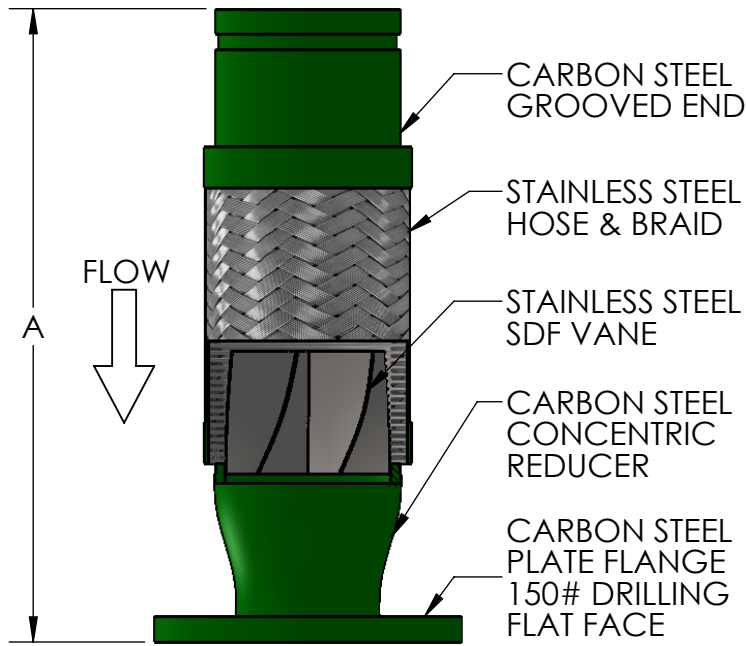
CUSTOMER: _____

PROJECT: _____

ENGINEER: _____

REV. 1	VANE STAINLESS	DATE 12/3/2013
		2323 W. HUBBARD ST. CHICAGO, IL 60612 TEL: 312-738-3800 FAX: 312-738-0415 WWW.METRAFLEX.COM
Suction Diffuser Flex with 150# Plate Flanges and a Reducer for Connecting to a S.R. Elbow		
DRAWN BY: DKISH		DATE: 11/22/2013
APPROVED: JC		DATE: 11/22/2013
SCALE: NONE	DRAWING NUMBER: SDFSR	

SHORT RADIUS
 DESIGNED TO BE INSTALLED
 IMMEDIATELY UP-STREAM OF A
 SHORT RADIUS 90° ELBOW.



*For safe working pressure above 70°F, multiply pressure shown at 70°F by correction factor of required temp.

Temperature (°F)	Factor
70	1.00
200	0.92
300	0.86
400	0.82
500	0.77
600	0.73

Qty	Part Number	Size (in)	A (in)	PSI @ 70°F	Project Info
	SDFSRGF2502	2-1/2 X 2	15	345	
	SDFSRGF0302	3 X 2	15	289	
	SDFSRGF0325	3 X 2-1/2	15	289	
	SDFSRGF0402	4 X 2	15-1/2	300	
	SDFSRGF0425	4 X 2-1/2	15-1/2	300	
	SDFSRGF0403	4 X 3	15-1/2	300	
	SDFSRGF0525	5 X 2-1/2	18-1/2	220	
	SDFSRGF0503	5 X 3	18-1/2	220	
	SDFSRGF0504	5 X 4	18-1/2	220	
	SDFSRGF0603	6 X 3	19	200	
	SDFSRGF0604	6 X 4	19	200	
	SDFSRGF0605	6 X 5	19	200	
	SDFSRGF0804	8 X 4	21	190	
	SDFSRGF0805	8 X 5	21	190	
	SDFSRGF0806	8 X 6	21	190	
	SDFSRGF1006	10 X 6	23	150	
	SDFSRGF1008	10 X 8	23	150	
	SDFSRGF1210	12 X 10	25	125	

LEAD FREE

The wetted surface of this product contacted by consumable water contains less than one quarter of one percent (0.25%) of lead by weight. Material complies with state codes and standards, where applicable, requiring reduced lead content.

MAX PERMANENT OFFSET FROM CENTERLINE - 3/8"
 MAX INTERMITTENT OFFSET FROM CENTERLINE - 1/8"

CUSTOMER: _____

PROJECT: _____

ENGINEER: _____

REV. 1	VANE STAINLESS	DATE 12/3/2013
		2323 W. HUBBARD ST. CHICAGO, IL 60612 TEL: 312-738-3800 FAX: 312-738-0415 WWW.METRAFLEX.COM
Suction Diffuser Flex with Grooved x 150# Plate Flange and Reducer for a S.R. Elbow		
DRAWN BY: DKISH		DATE: 11/22/2013
APPROVED: JC		DATE: 11/22/2013
SCALE: NONE	DRAWING NUMBER: SDFSRGF	