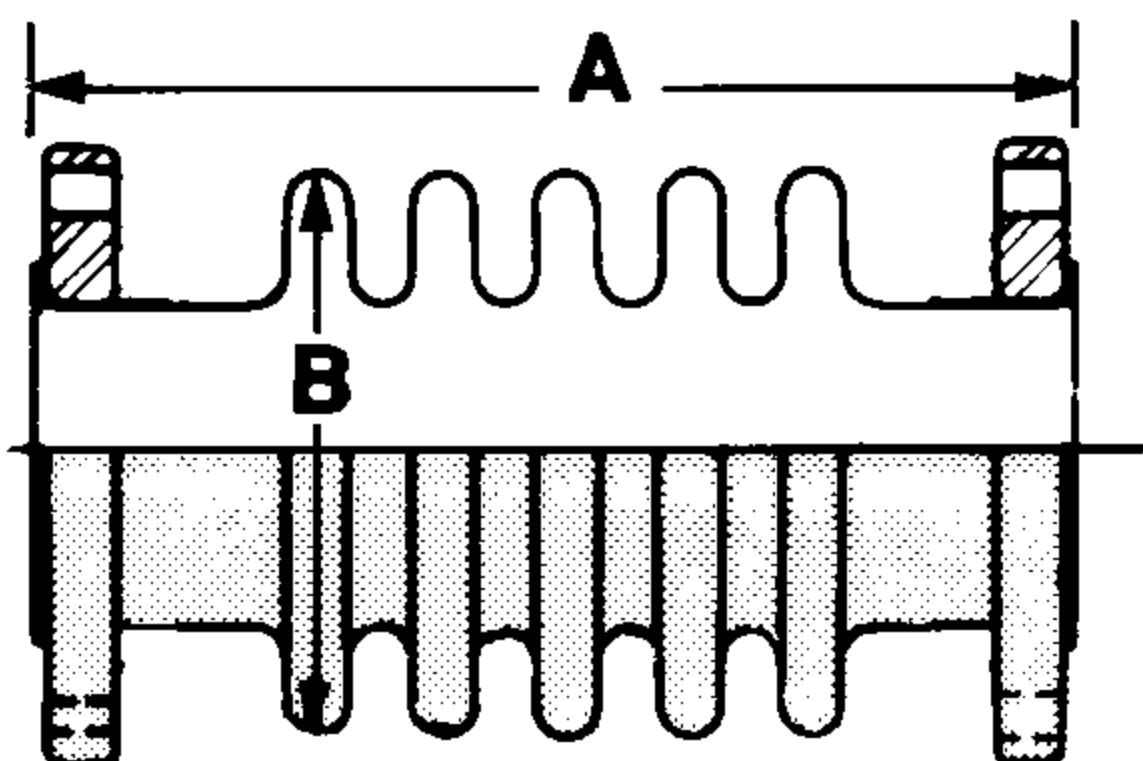
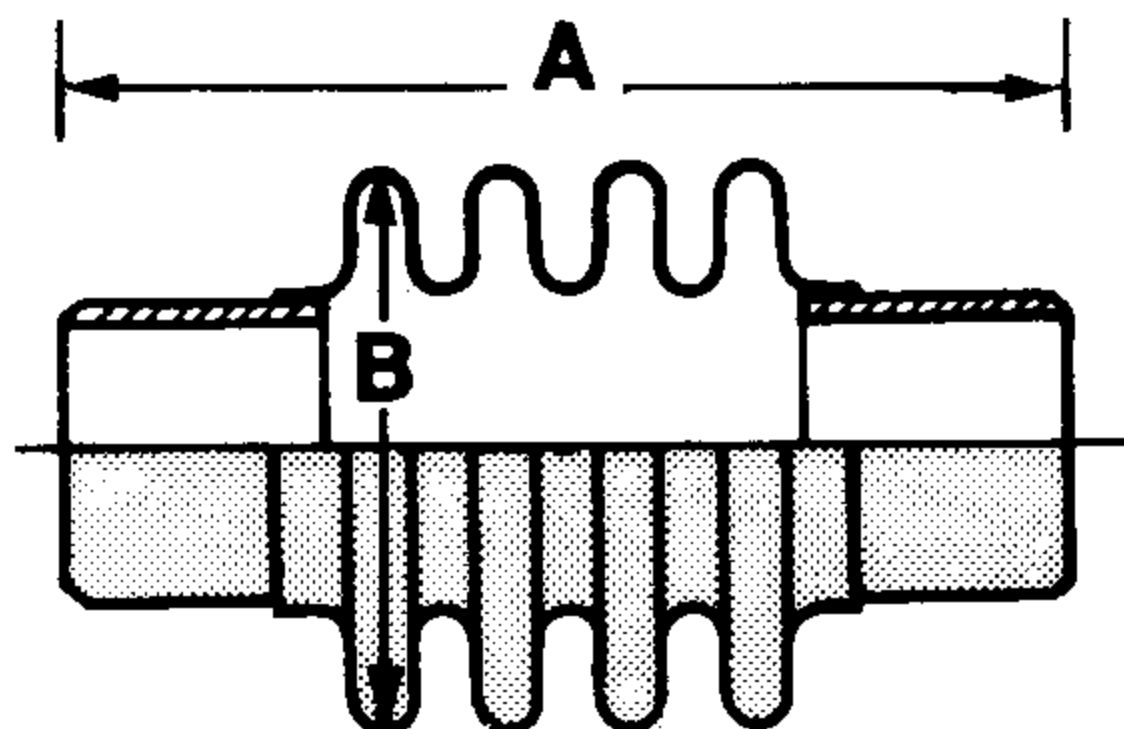


**DOUBLE END JOINT
WITH ANCHOR BASE**



FLANGED END JOINT



WELD END JOINT

**STYLE MN
BELLOWS-TYPE
EXPANSION JOINT**

DESIGN SPECIFICATIONS:

MODEL MN50
 MAXIMUM WORKING PRESSURE: 50 psi
 WORKING TEMPERATURE: 850°F
 TEST PRESSURE: 75 psi

MODEL MN150
 MAXIMUM WORKING PRESSURE: 150 psi
 WORKING TEMPERATURE: 850°F
 TEST PRESSURE: 225 psi

ALL JOINTS RATED FOR FULL VACUUM.

SIZES 2" - 36" AVAILABLE

MEETS MIL SPEC: MIL-E-17813C

STANDARD MATERIALS OF CONSTRUCTION		
ITEM	NAMES	MATERIAL
1	BELLOWS	T 304 S.S.
2	FLANGE	CARBON STEEL
3	WELD END	A 53 / A 106

* Optional Materials Available . . .
 Please contact factory.

					DIMENSIONS			OPTIONS				
QTY.	PIPE SIZE	MODEL	# OF CORR.	END FITTING	A	B	C	MOVE-MENT	TIE RODS	COVER	LINER	NOTES

CUSTOMER _____

PROJECT _____

ENGINEER _____

ARCHITECT _____

PRO OR P.O. NO. _____

the Metraflex company
 CHICAGO ILLINOIS

DESCRIPTION: **MODEL MN
 BELLOWS-TYPE EXPANSION JOINT**

DRAWN BY : TPH	DATE: 6-14-91	DRAWING NO: MN-91
-------------------	------------------	----------------------