

Qty	NPS (in)	F/F (in)*	Min. Bend Radius		Max Working Pressure @ 70°F (PSI)	Project Info
			Static (in)	Dynamic (in)		
	1/2	12	1.5	6.0	985	
	3/4	12	2.0	9.0	690	
	1	12	2.5	10.0	555	

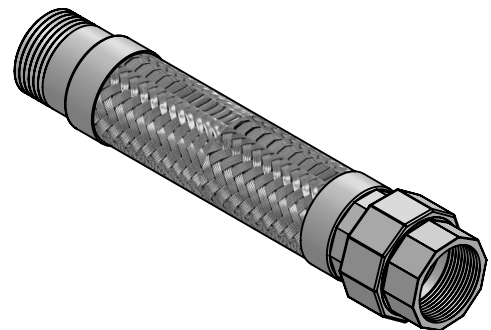
*Custom Lengths Available

For safe working pressure above 70°F, multiply the pressure shown at 70°F times the correction factor of the required temperature.

Temperature (°F)	Factor
70	1.0
200	.92
300	.86
400	.82
500	.77
600	.73

LEAD FREE

The wetted surface of this product contacted by consumable water contains less than one quarter of one percent (0.25%) of lead by weight. Material complies with state codes and standards, where applicable, requiring reduced lead content.

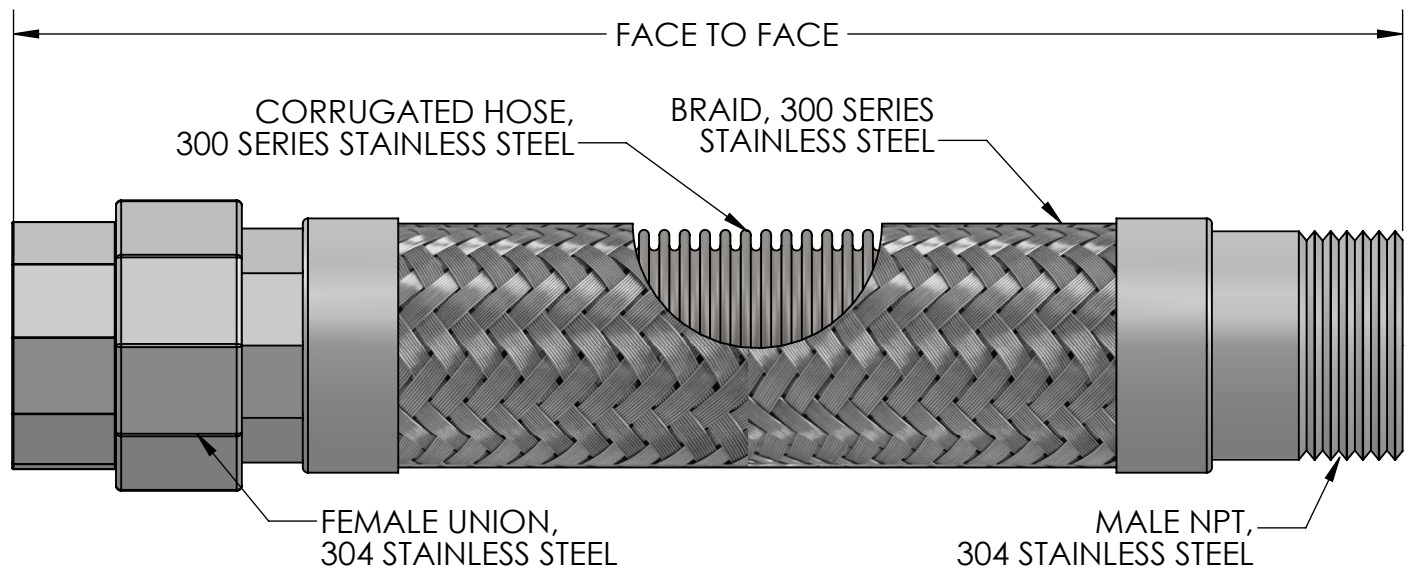


CUSTOMER: _____

PROJECT: _____

ENGINEER: _____

REV.	DATE
2323 W. HUBBARD ST. CHICAGO, IL 60612 TEL: 312-738-3800 FAX: 312-738-0415 WWW.METRAFLEX.COM	
<h2>MODEL SFLXTU12</h2>	
12" F/F SUPERFLEX STAINLESS STEEL CONNECTOR	
DRAWN BY: DKISH	DATE: 7/11/2014
APPROVED: JC	DATE: 7/11/2014
SCALE: NONE	DRAWING NUMBER: SFLXTU12



Qty	NPS (in)	F/F (in)*	Min. Bend Radius		Max Working Pressure @ 70°F (PSI)	Project Info
			Static (in)	Dynamic (in)		
	1/2	18	1.5	6.0	985	
	3/4	18	2.0	9.0	690	
	1	18	2.5	10.0	555	
	1-1/4	18	3.0	11.5	520	
	1-1/2	18	3.5	12.0	480	
	2	18	4.5	17.5	415	

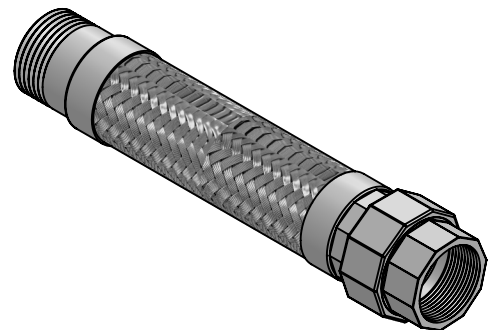
*Custom Lengths Available

For safe working pressure above 70°F, multiply the pressure shown at 70°F times the correction factor of the required temperature.

Temperature (°F)	Factor
70	1.0
200	.92
300	.86
400	.82
500	.77
600	.73

LEAD FREE

The wetted surface of this product contacted by consumable water contains less than one quarter of one percent (0.25%) of lead by weight. Material complies with state codes and standards, where applicable, requiring reduced lead content.

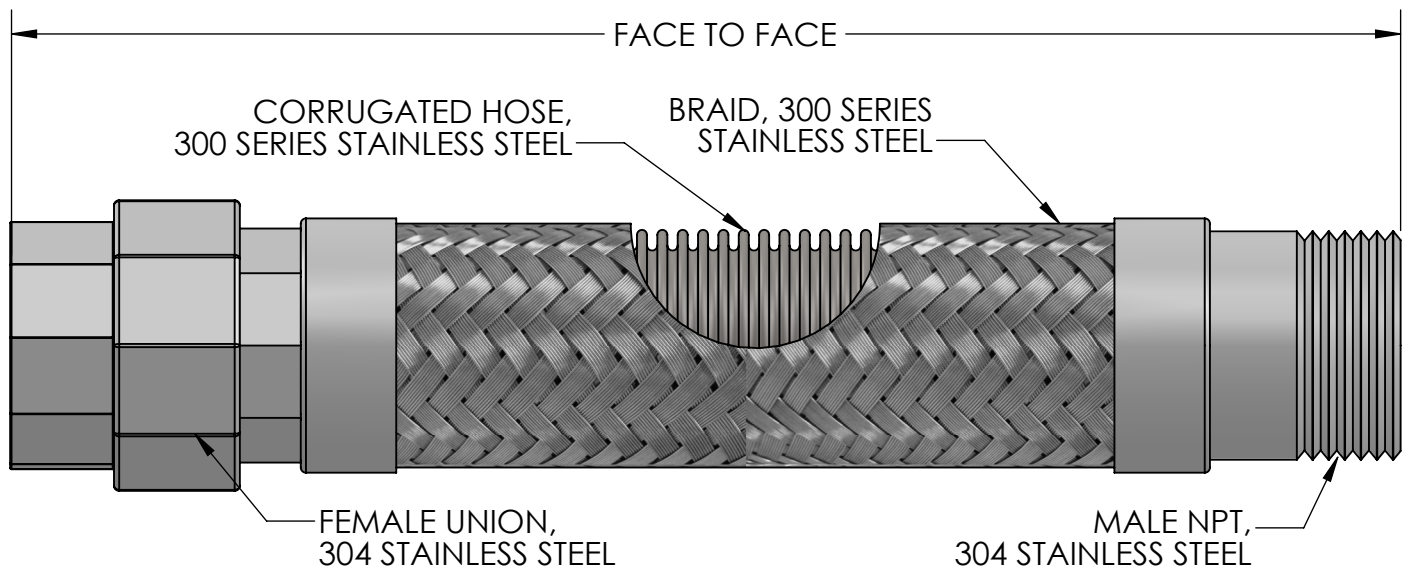


CUSTOMER: _____

PROJECT: _____

ENGINEER: _____

REV.	DATE
2323 W. HUBBARD ST. CHICAGO, IL 60612 TEL: 312-738-3800 FAX: 312-738-0415 WWW.METRAFLEX.COM	
<h2>MODEL SFLXTU18</h2>	
18" F/F SUPERFLEX STAINLESS STEEL CONNECTOR	
DRAWN BY: DKISH	DATE: 7/11/2014
APPROVED: JC	DATE: 7/11/2014
SCALE: NONE	DRAWING NUMBER: SFLXTU18



Qty	NPS (in)	F/F (in)*	Min. Bend Radius		Max Working Pressure @ 70°F (PSI)	Project Info
			Static (in)	Dynamic (in)		
	1/2	24	1.5	6.0	985	
	3/4	24	2.0	9.0	690	
	1	24	2.5	10.0	555	
	1-1/4	24	3.0	11.5	520	
	1-1/2	24	3.5	12.0	480	
	2	24	4.5	17.5	415	

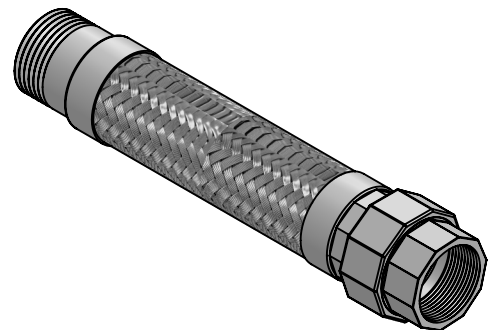
*Custom Lengths Available

For safe working pressure above 70°F, multiply the pressure shown at 70°F times the correction factor of the required temperature.

Temperature (°F)	Factor
70	1.0
200	.92
300	.86
400	.82
500	.77
600	.73

LEAD FREE

The wetted surface of this product contacted by consumable water contains less than one quarter of one percent (0.25%) of lead by weight. Material complies with state codes and standards, where applicable, requiring reduced lead content.

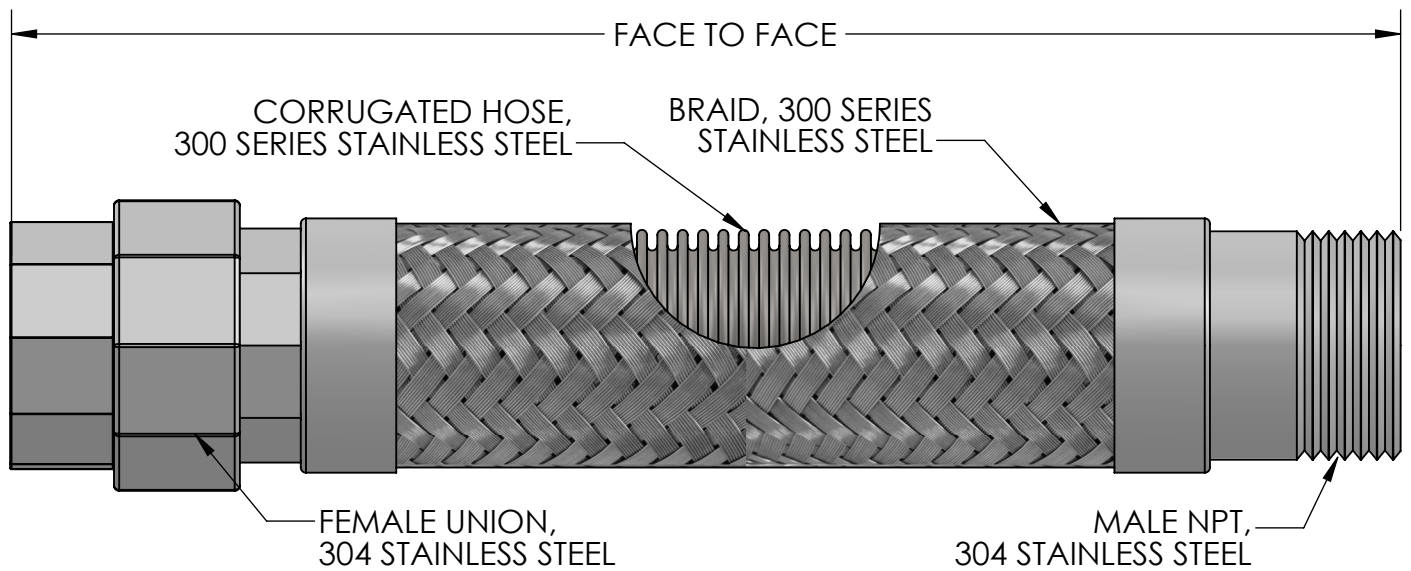


CUSTOMER: _____

PROJECT: _____

ENGINEER: _____

REV.	DATE
2323 W. HUBBARD ST. CHICAGO, IL 60612 TEL: 312-738-3800 FAX: 312-738-0415 WWW.METRAFLEX.COM	
<h2>MODEL SFLXTU24</h2> <p>24" F/F SUPERFLEX STAINLESS STEEL CONNECTOR</p>	
DRAWN BY: DKISH	DATE: 7/11/2014
APPROVED: JC	DATE: 7/11/2014
SCALE: NONE	DRAWING NUMBER: SFLXTU24



Qty	NPS (in)	F/F (in)*	Min. Bend Radius		Max Working Pressure @ 70°F (PSI)	Project Info
			Static (in)	Dynamic (in)		
	1/2	30	1.5	6.0	985	
	3/4	30	2.0	9.0	690	
	1	30	2.5	10.0	555	
	1-1/4	30	3.0	11.5	520	
	1-1/2	30	3.5	12.0	480	
	2	30	4.5	17.5	415	

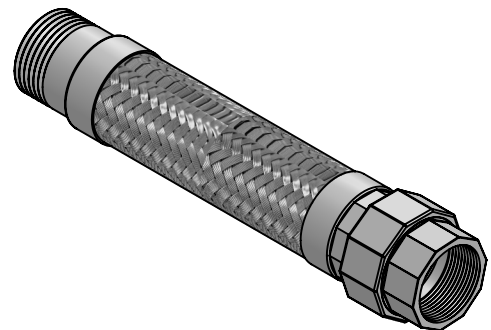
*Custom Lengths Available

For safe working pressure above 70°F, multiply the pressure shown at 70°F times the correction factor of the required temperature.

Temperature (°F)	Factor
70	1.0
200	.92
300	.86
400	.82
500	.77
600	.73

LEAD FREE

The wetted surface of this product contacted by consumable water contains less than one quarter of one percent (0.25%) of lead by weight. Material complies with state codes and standards, where applicable, requiring reduced lead content.

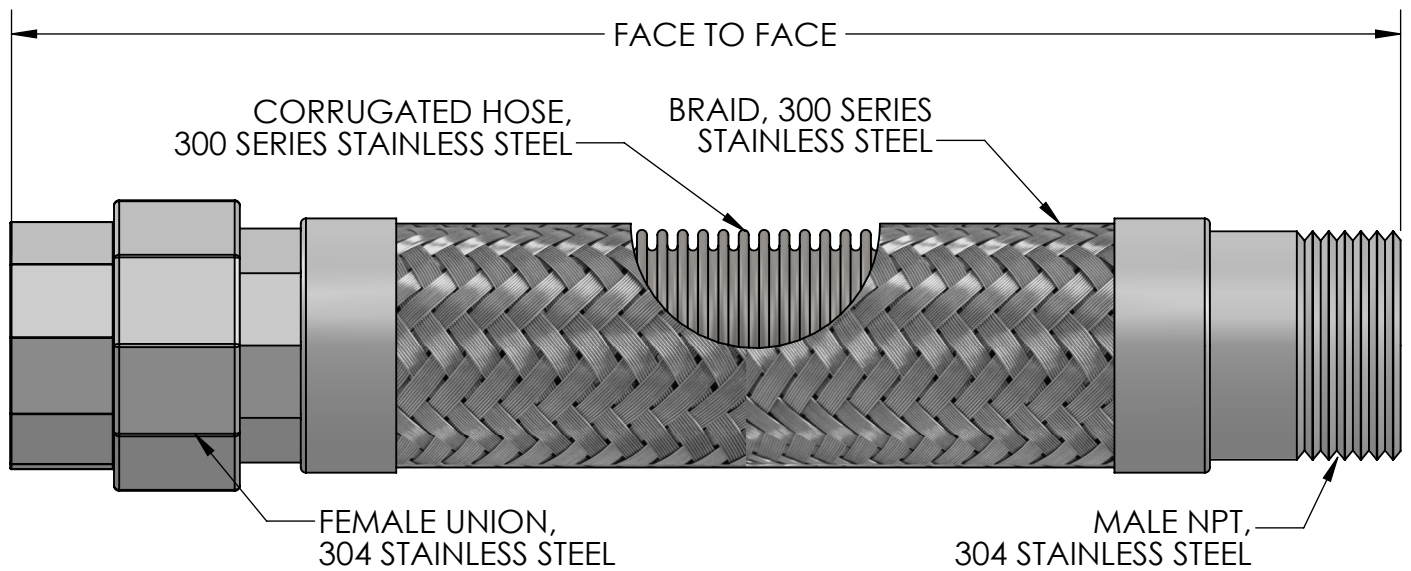


CUSTOMER: _____

PROJECT: _____

ENGINEER: _____

REV.	DATE
2323 W. HUBBARD ST. CHICAGO, IL 60612 TEL: 312-738-3800 FAX: 312-738-0415 WWW.METRAFLEX.COM	
<h2>MODEL SFLXTU30</h2>	
30" F/F SUPERFLEX STAINLESS STEEL CONNECTOR	
DRAWN BY: DKISH	DATE: 7/11/2014
APPROVED: JC	DATE: 7/11/2014
SCALE: NONE	DRAWING NUMBER: SFLXTU30



Qty	NPS (in)	F/F (in)*	Min. Bend Radius		Max Working Pressure @ 70°F (PSI)	Project Info
			Static (in)	Dynamic (in)		
	1/2	36	1.5	6.0	985	
	3/4	36	2.0	9.0	690	
	1	36	2.5	10.0	555	
	1-1/4	36	3.0	11.5	520	
	1-1/2	36	3.5	12.0	480	
	2	36	4.5	17.5	415	

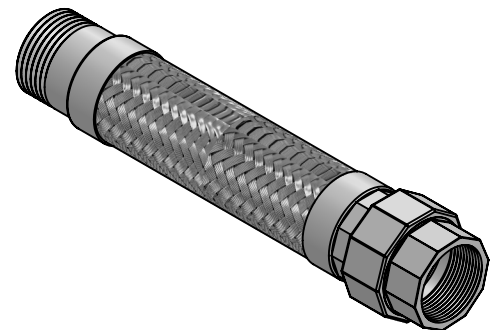
*Custom Lengths Available

For safe working pressure above 70°F, multiply the pressure shown at 70°F times the correction factor of the required temperature.

Temperature (°F)	Factor
70	1.0
200	.92
300	.86
400	.82
500	.77
600	.73

LEAD FREE

The wetted surface of this product contacted by consumable water contains less than one quarter of one percent (0.25%) of lead by weight. Material complies with state codes and standards, where applicable, requiring reduced lead content.



CUSTOMER: _____

PROJECT: _____

ENGINEER: _____

REV.	DATE
2323 W. HUBBARD ST. CHICAGO, IL 60612 TEL: 312-738-3800 FAX: 312-738-0415 WWW.METRAFLEX.COM	
<h2>MODEL SFLXTU36</h2>	
36" F/F SUPERFLEX STAINLESS STEEL CONNECTOR	
DRAWN BY: DKISH	DATE: 7/11/2014
APPROVED: JC	DATE: 7/11/2014
SCALE: NONE	DRAWING NUMBER: SFLXTU36