

Note: Do not use wrenches on hose or braid collar.

Qty	Part Number	Size I.D. (in)	A ± 1/8 (in)	Pressure* (PSI)	Weight (Lbs)	Project Info
	SSTC0050	1/2	10	1100	0.5	
	SSTC0075	3/4	10	792	0.8	
	SSTC0100	1	10	571	1	
	SSTC0125	1-1/4	10	531	1.5	
	SSTC0150	1-1/2	12	472	2	
	SSTC0200	2	14	500	3	
	SSTC0250	2-1/2	16	287	4	
	SSTC0300	3	16	288	6	

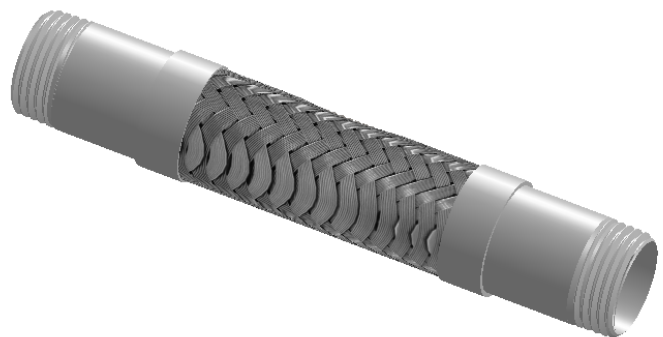
MAX INTERMITTENT OFFSET FROM CENTERLINE 1/4"
MAX PERMANENT OFFSET FROM CENTERLINE 1/2"

*For safe working pressure above 70°F, multiply the pressure shown at 70°F times the correction factor of the required temperature.

Temperature (°F)	Factor
70	1.0
200	.92
300	.86
400	.82
500	.77
600	.73

LEAD FREE

The wetted surface of this product contacted by consumable water contains less than one quarter of one percent (0.25%) of lead by weight. Material complies with state codes and standards, where applicable, requiring reduced lead content.



CUSTOMER: _____

PROJECT: _____

ENGINEER: _____

REV.	DATE
2323 W. HUBBARD ST. CHICAGO, IL 60612 TEL: 312-738-3800 FAX: 312-738-0415 WWW.METRAFLEX.COM	
MODEL SST THREADED METAL CONNECTOR	
DRAWN BY: DKISH	DATE: 1/10/2014
APPROVED: JC	DATE: 1/10/2014
SCALE: NONE	DRAWING NUMBER: SSTC