

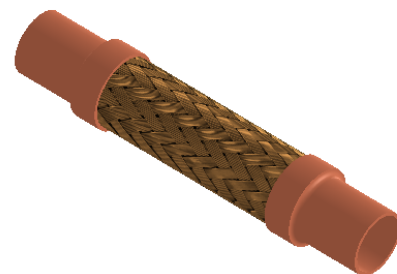
Note: Do not use wrenches on hose or braided collar.  
 The I.D. of copper tube ends meets ASA Standard B16.18-1950 and ASA B16.22-1951.

Qty	Part Number	Nom. Size (in)	A ± 1/4 (in)	B ± 1/8 (in)	C Max. (in)	Max. Pressure @ 70°F (PSI)*	Approx. Weight (Lbs)	Project Info
	BBSC0050	1/2	10	7/8	1.031	450	1	
	BBSC0075	3/4	10	1-1/4	1.406	340	1	
	BBSC0100	1	10	1-1/2	1.781	302	1	
	BBSC0125	1-1/4	10	1-5/8	2.109	280	2	
	BBSC0150	1-1/2	12	2	2.438	245	3	
	BBSC0200	2	14	2-1/2	3.078	190	4	
	BBSC0250	2-1/2	16	2-29/32	3.969	150	3	
	BBSC0300	3	16	3-13/32	4.422	150	3	

\* Sizes from 2 1/2" employ stainless steel braided hose to assure high pressures.  
 MAX INTERMITTENT OFFSET FROM CENTERLINE 1/4"  
 MAX PERMANENT OFFSET FROM CENTERLINE 1/2"

\*For safe working pressure above 70°F, multiply the pressure shown at 70°F times the correction factor of the required temperature.

Temperature (°F)	Factor
70	1.0
150	.92
200	.89
250	.86
300	.83
350	.81



### LEAD FREE

The wetted surface of this product contacted by consumable water contains less than one quarter of one percent (0.25%) of lead by weight. Material complies with state codes and standards, where applicable, requiring reduced lead content.

CUSTOMER: \_\_\_\_\_

PROJECT: \_\_\_\_\_

ENGINEER: \_\_\_\_\_

REV.	DATE
2323 W. HUBBARD ST. CHICAGO, IL 60612 TEL: 312-738-3800 FAX: 312-738-0415 WWW.METRAFLEX.COM	
<h2>MODEL BBS</h2> <h3>BRONZE CONNECTOR, SWEAT ENDS</h3>	
DRAWN BY: DKISH	DATE: 1/10/2014
APPROVED: JC	DATE: 1/10/2014
SCALE: NONE	DRAWING NUMBER: BBS