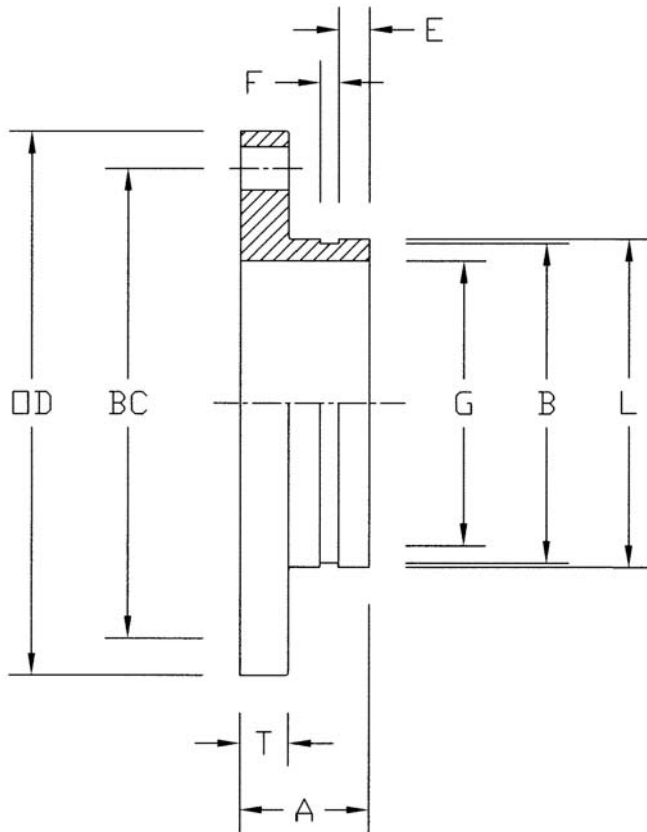


**GROOVED BY 125#  
FLANGED ADAPTOR**  
DUCTILE IRON ASTM A 395



**OPERATING TEMPERATURE  
& PRESSURE -**

**WATER, OIL, GAS**  
400 PSI @ 100°F  
150 PSI @ 300°F

QTY	SIZE	A	B	BOLT CIRCLE	OD	E	F	G	L	T	BOLT HOLES		LBS
											NO.	DIA.	
	2"	1-5/8	2.25	4.75	6	.63	.31	1.86	2.37	.43	4	3/4	2-1/2
	2-1/2"	1-5/8	2.72	5.5	7	.63	.31	2.21	2.87	.50	4	3/4	3
	3"	1-5/8	3.34	6	7.5	.63	.31	2.83	3.5	.59	4	3/4	4-1/2
	4"	2	4.33	7.5	9	.63	.37	3.78	4.5	.66	8	3/4	8
	5"	3	5.39	8.5	10	.63	.37	4.78	5.56	.66	8	7/8	11
	6"	3-1/4	6.46	9.5	11	.63	.37	5.75	6.63	.82	8	7/8	13
	8"	3-1/2	8.44	11.75	13.5	.75	.44	7.65	8.63	.94	8	7/8	25
	10"	3-3/4	10.56	14.25	16	.75	.5	9.57	10.75	.98	12	1	33
	12"	4	12.53	17	19	.75	.5	11.42	12.75	1.25	12	1	63

ALL DIMENSIONS IN INCHES

CUSTOMER \_\_\_\_\_

PROJECT \_\_\_\_\_

ENGINEER \_\_\_\_\_

ARCHITECT \_\_\_\_\_

PRO. OR P.O. NO. \_\_\_\_\_



DESCRIPTION:

**GROOVED BY FLANGED ADAPTOR**  
STYLE GAD125

DRAWING BY:  
JR

DATE:  
10/6/09

DRAWING NO.  
GAD125C